

245

Product description:

Door-combined step for mounting under the vehicle floor

Type: X3

Vehicle type:

MB Sprinter 2006 until now
VW Crafter 2006 until 2017

Rear-wheel drive

Wheelbase: L2 / L3 / L4

New Article-No.:

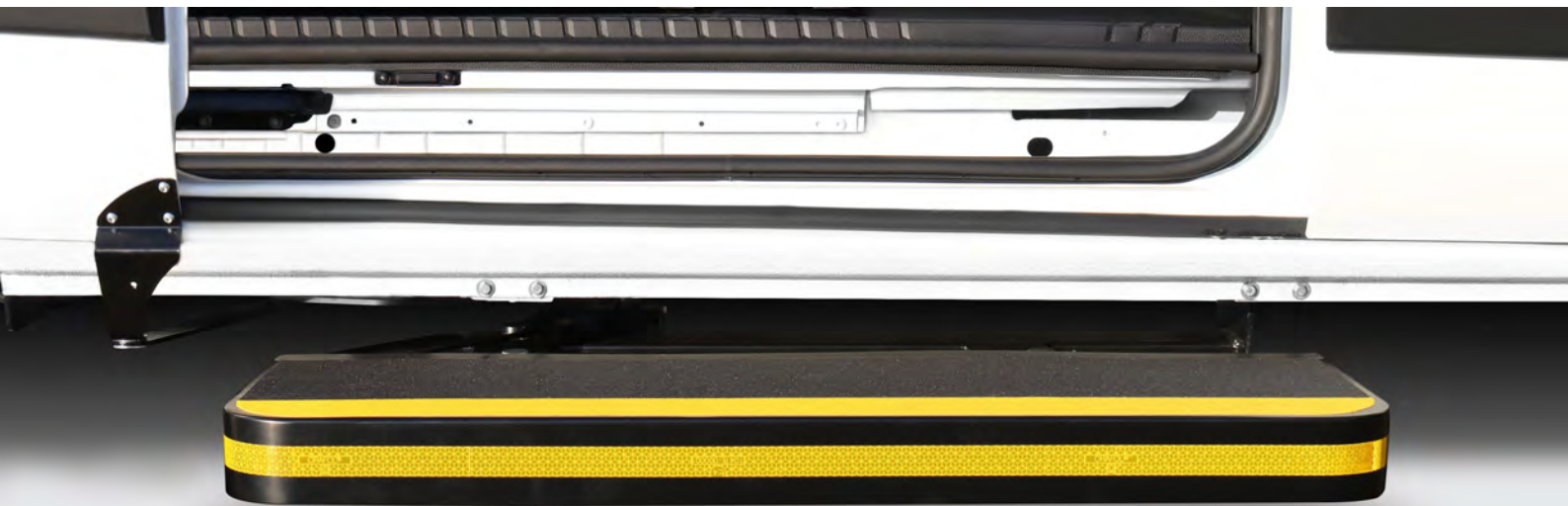
101315
101608

Old article No.:

X3-1000MS.1
X3-1200MS.1



Installation manual



Wheelbase:
middle - 3665 mm /
long - 4325 mm



Load capacity:
350 kg

Technical Details:

Legislation: The product complies with the conditions of Directive 98/37/EC ("Machinery Directive")



Steps



FOREWORD

Dear Reader,

This operating manual provides all the information required for safe operation of the door-combined step. The step has been designed and built in accordance with the current state of the art and recognized safety regulations. Nevertheless, hazards to persons or property may arise, because not all danger points can be avoided if the functionality is to be maintained. However, accidents due to these dangers can be prevented by following these operating instructions.

These operating instructions only apply to the step specified on the cover sheet and in the footers. Please compare this information with the information on the type plate. After working through this installation manual for the first time, keep it in a safe place for the entire service life of the door-combined step. If you sell the step, pass this manual on to the next owner. All information, illustrations and dimensions in this manual are non-binding. No claims of any kind can be derived from them. Reprinting and reproduction of any kind, including excerpts, require the written consent of the manufacturer. Conversion or modifications to the door-combined step are only permitted with the written approval of the manufacturer.

Unauthorized modifications invalidate any liability on the part of the manufacturer and the warranty. Only use original spare parts and accessories approved by the manufacturer. Otherwise, the design properties of the door-combined step, the functionality or the safety may be impaired. The use of other parts therefore cancels the liability for the resulting consequences.

TABLE OF CONTENTS

FOREWORD	2
1. SAFETY	4
1.1 WARNING INFORMATION	4
1.2 INTENDED USE	4
1.3 RESTRICTIONS.....	4
1.4 SAFETY REGULATIONS	4
2. STEP	5
2.1 DESCRIPTION	5
2.2 CONSTRUCTION	5
2.3 VEHICLE SPECIFIC MOUNTING KIT	6
2.3.1 DESCRIPTION	6
2.3.2 OVERVIEW MOUNTING KIT MERCEDES SPRINTER / VW CRAFTER.....	6
2.3.3 OVERVIEW DOOR MOUNTING KIT MB SPRINTER (165-00-0041AD.1)	7
2.3.4 OVERVIEW MOUNTING KIT MB SPRINTER (160-13-106AD.1)	8
3. PRE-ASSEMBL MOUNTING KIT.....	9
3.1 MONTAGE AN KAROSSE	9
3.2 MONTAGE AN SCHIEBETÜR	14
4. INSTALLATION	10
4.1 MOUNTING TO CAR BODY.....	10
4.2 MOUNTING TO SLIDING DOOR.....	14
5. USE OF STEP.....	18
6. CARE/MAINTENANCE	18
7. DISPOSAL.....	18
8. CUSTOMER SERVICE	18

1. SAFETY

1.1 WARNING INFORMATION

During installation, operation and maintenance of the door-combined step, there are various risks of injury and material damage. It is therefore essential that you read these operating instructions carefully before installation and operation. In addition to the safety instructions in this manual, please also follow the statutory regulations, in particular the safety and accident prevention regulations.

1.2 INTENDED USE

The door-combined step is used to make it easier for people to get in and out of a vehicle.

1.3 RESTRICTIONS

Die Stufe wurde so entwickelt, dass sie funktional und zuverlässig ist. Das Produkt wurde so einfach und zuverlässig wie möglich konstruiert. Es wurde berücksichtigt, dass die Stufe möglicherweise unter einem Fahrzeug eingebaut wird, das unter extremen Umgebungsbedingungen betrieben wird.

1.4 SAFETY REGULATIONS

Always keep this safety manual with the step. The user's attention should be made aware of them before operating the step. Read and follow these safety instructions carefully. The step is designed as an extra step for entering the vehicle. In this case, the weight of the passenger must not exceed the maximum load.

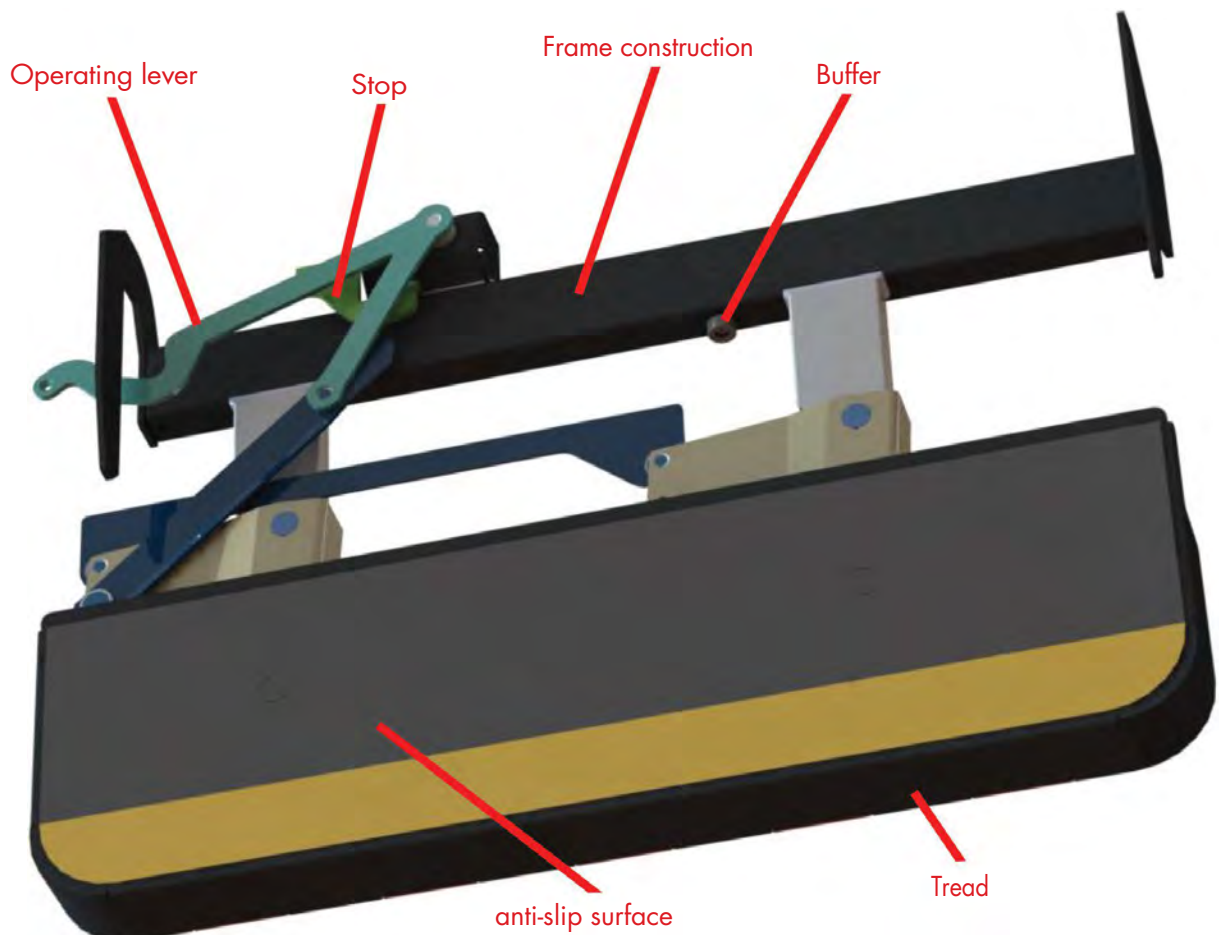
1. The vehicle must be stationary before operating the step. Make sure that the handbrake has been pulled or the parking brake applied.
2. Regularly check the step for external damage and tight fit.
3. Before operating the step, make sure that there is no person or obstacle near the step. Make sure that there is no person or obstacle outside the vehicle in the direction of movement of the step.
4. It is recommended that only by the driver or other qualified person operate the step.
5. The driver or operator must have an unobstructed view of the step when operating it.
6. It is recommended to step on the middle of the step.
7. The step must be kept clean and free from oil and other slippery substances.
8. If you have doubts about the safety of a passenger when stepping on the step, help them.
9. Never use the step for any purpose other than that described here.
10. If you have any questions about the safe operation of the step, contact the responsible persons directly.
11. Never overload the step
12. Always operate the step until it is fully retracted or extended.
13. Repair and maintenance work must be carried out exclusively by qualified and trained personnel.
14. Only use original spare parts if parts of the step need to be replaced.
15. If the anti-slip profile of the step becomes slippery due to wear, the step must be replaced.
16. Notify the step supplier of any hazards you notice with regard to the step or during its operation.
17. Before each ride, check that the step is retracted.
18. When extending and retracting the step, there must be no persons on it.
19. There is a risk of jamming/crushing during transport and assembly. Therefore, secure the step with suitable aids during transport.

2. STEP

2.1 DESCRIPTION

The step is automatically extended when the side door is opened. This is achieved by a mechanical connection between the step and the sliding door. During the journey, it is retracted under the vehicle and protects the mechanism from external influences. The step has a non-slip surface. To increase safety, it is provided with rounded outer edges.

2.2 CONSTRUCTION



2.3 VEHICLE SPECIFIC MOUNTING KIT

2.3.1 DESCRIPTION

For each step, you will receive a vehicle-specific mounting set that is optimally matched to the respective vehicle.

This set consists in each case of a door mounting kit and a mounting kit.

- Mounting kit = Fastening the step to the vehicle floor
- Door mounting kit = Connection of the operating lever of the step to the sliding door from the vehicle

2.3.2 OVERVIEW MOUNTING KIT MERCEDES SPRINTER / VW CRAFTER

- Article: FMS8000AD.1
- Vehicle type: Mercedes Sprinter BM906/907
 > VW Crafter 2006 < 2017
- Model: 518 / 515 / 315
- Wheelbase: middle & long



DOOR MOUNTING KIT MB SPRINTER (165-00-0041AD.1)

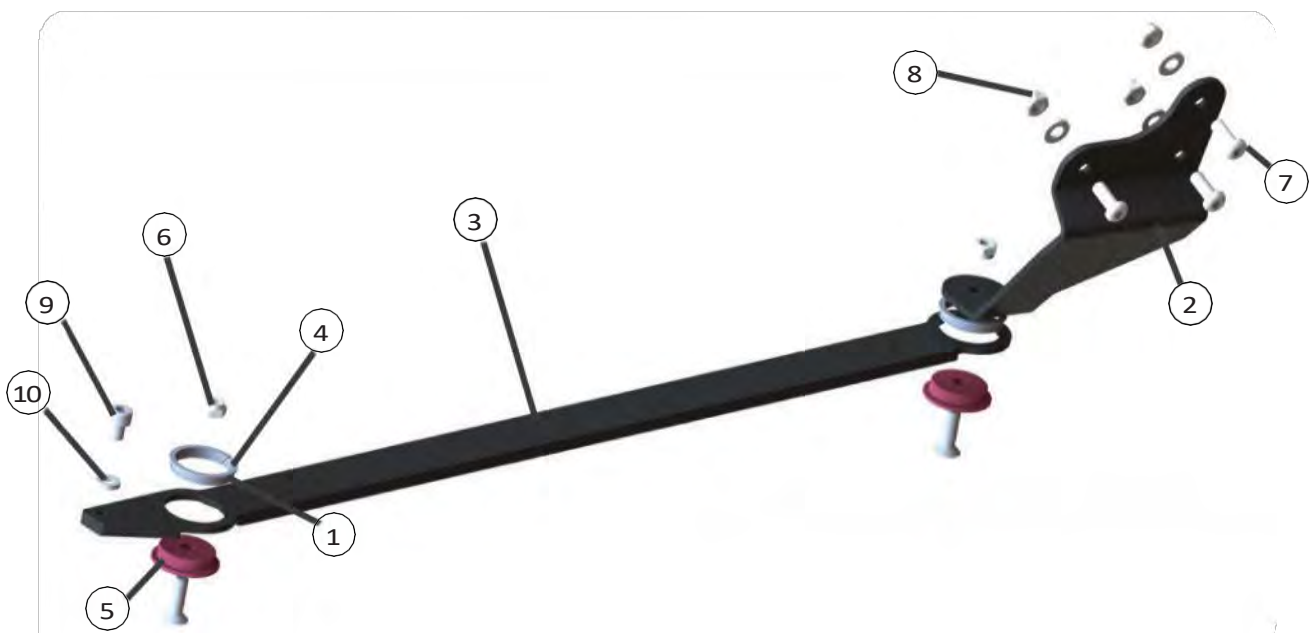


MOUNTING KIT MB SPRINTER (160-13-106AD.1)

2.3 VEHICLE SPECIFIC MOUNTING KIT

2.3.3 OVERVIEW DOOR MOUNTING KIT MB SPRINTER (165-00-0041AD.1)

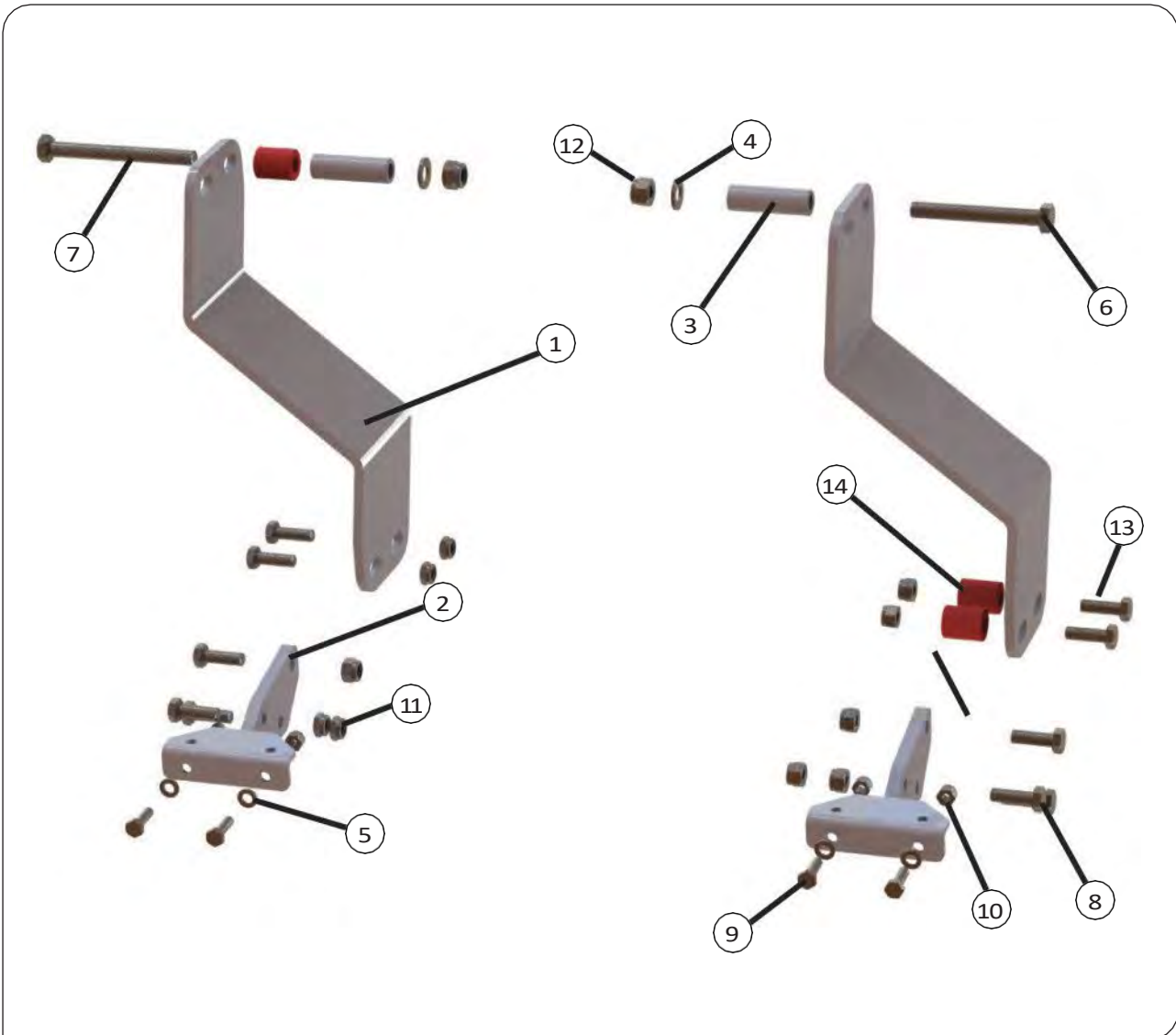
Pos	Article	Description	Quantity
1	2950 0170	Center piece	2
2	2950 0216	Door connection plate	1
3	2950 0230	Connecting rod	1
4	MCM 2503	Clip bearing	2
5	ISO 10642 M6x20 20N	Countersunk screw ISK	2
6	ISO 10511 M6-N	Hexagon nut flat shape	5
7	ISO 7380-M6 x16 – 16N	Flat head screw ISK	3
8	ISO 7089-6	Washer	3
9	DIN912 M6x8-8.8	Cap screw with ISK	1
10	NLDF6	Locking Plate	1



DOOR MOUNTING KIT MB SPRINTER "EXPLOSION"

2.3 VEHICLE SPECIFIC MOUNTING KIT

2.3.4 OVERVIEW MOUNTING KIT MB SPRINTER (160-13-106AD.1)

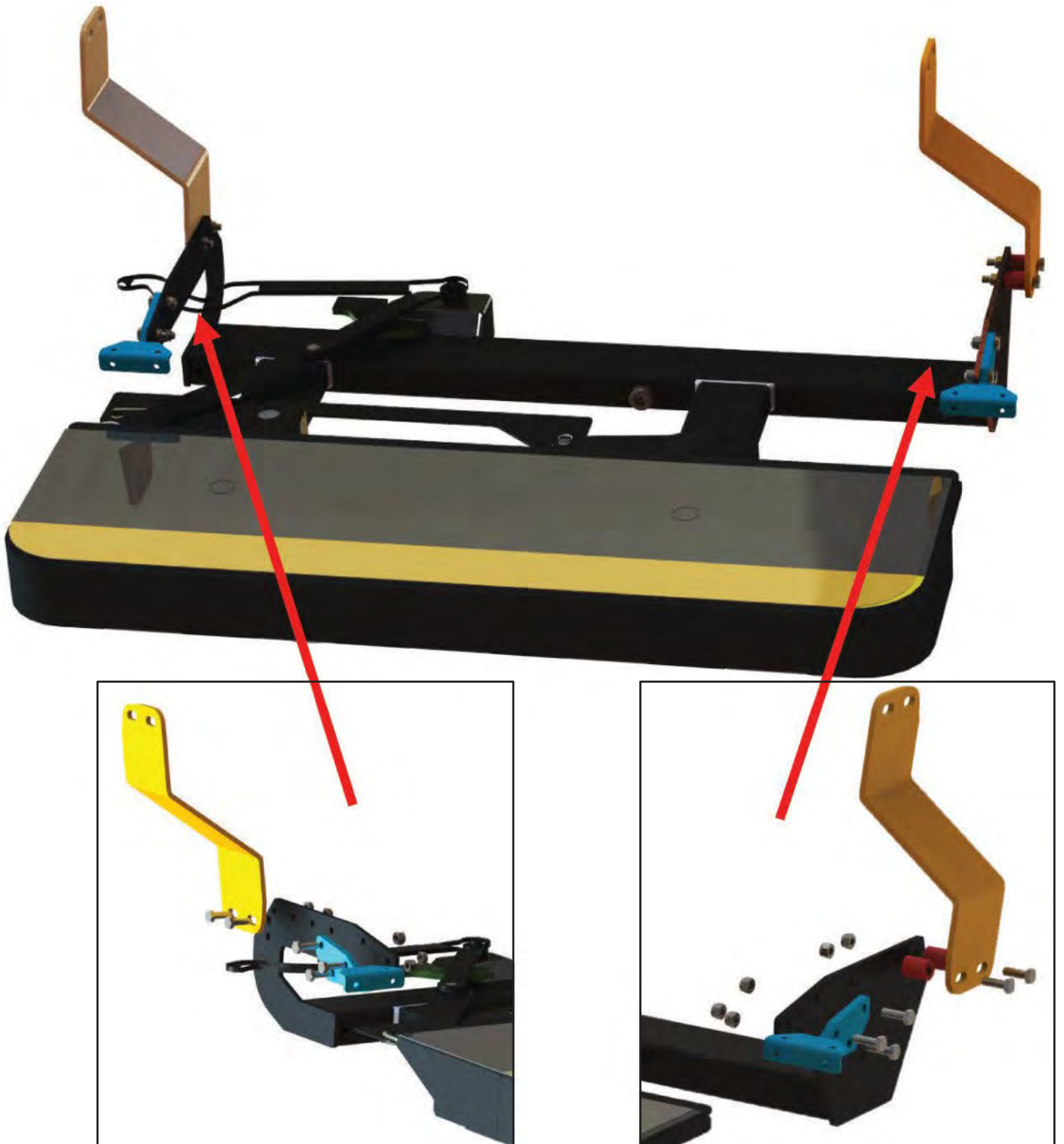


MOUNTING KIT MB SPRINTER "EXPLOSION"

Pos	Article	Description	Quantity
1	2950 0213	Retaining plate	2
2	2950 0214	Mounting bracket	2
3	2950 0220	Sleeve	2
4	Washer ISO 7091 - 10	Washer	2
5	Washer ISO 7091 - 6	Washer	4
6	DIN 933-M10X80-8.8 VZ	Hexagon head screw	1
7	DIN 933-M10X100-8.8 VZ	Hexagon head screw	1
8	DIN 933-M8X25-8.8 V Z	Hexagon head screw	2
9	DIN 933-M6X20-8.8 VZ	Hexagon head screw	4
10	DIN 985-M6-10 VZ	Hexagon nuts with clamping part	4
11	DIN 985-M8-10 VZ	Hexagon nuts with clamping part	8
12	DIN 985-M10-10 VZ	Hexagon nuts with clamping part	2
13	DIN 933-M8X50-8.8 VZ	Hexagon head screw	2
14	Wiehl-M131677	Spacer sleeve 25 mm	3

3. PRE-ASSEMBLY MOUNTING KIT

Pre-assemble the holders as shown:

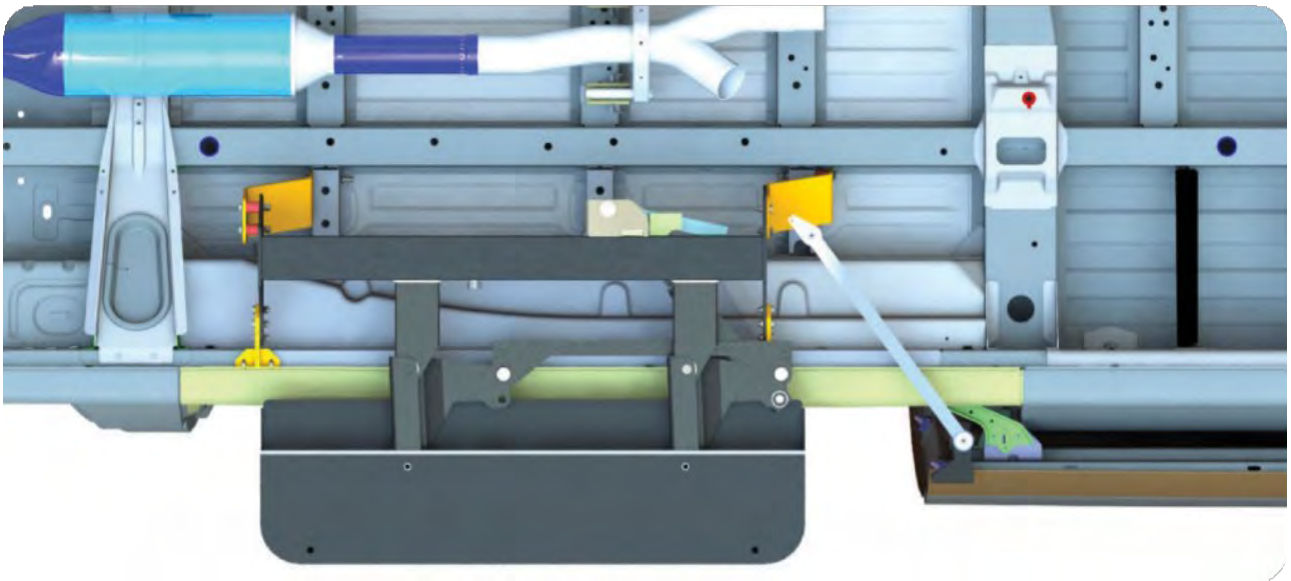


4. INSTALLATION

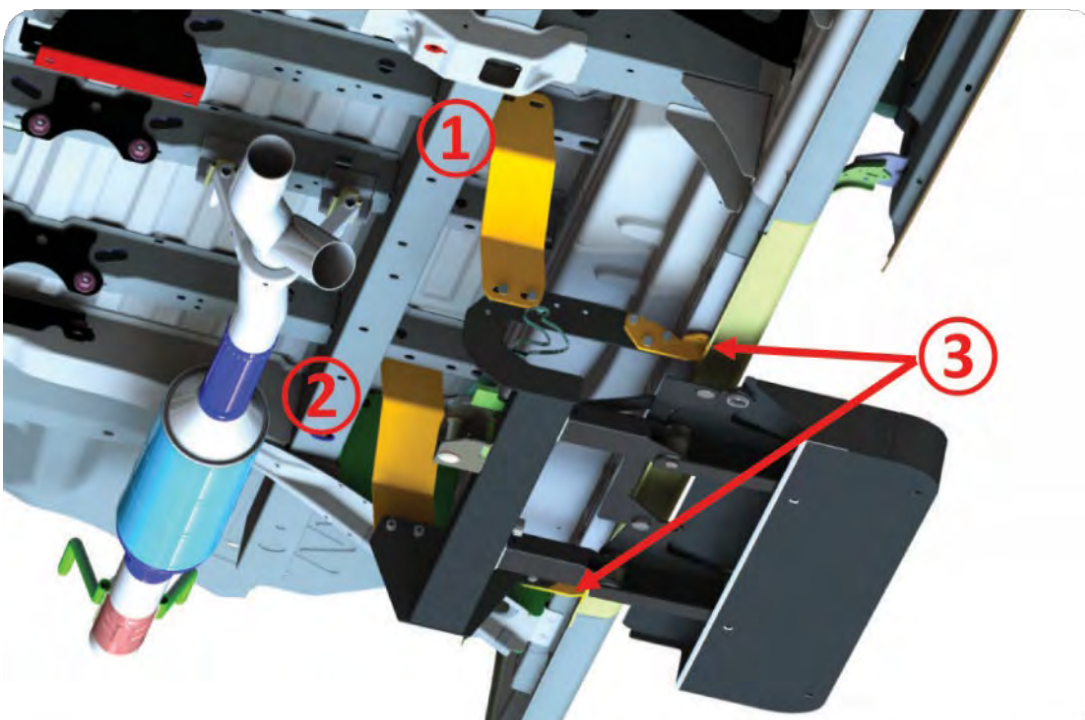
4.1 MOUNTING ON CAR BODY

Mount the door-combined step to the vehicle body using the supplied mounting kit (see chapter 2.3.4 "Overview of mounting kit MB Sprinter"). Align the step as shown in Figure 6 **horizontally and parallel** to the vehicle using a jack and secure it to the vehicle with suitable tools (gripping pliers and screw clamp) to prevent it from falling down.

Overview body with X3 step



Align the step under the vehicle and secure it against accidental tipping or falling!
The step must be aligned parallel to the vehicle.



4. INSTALLATION

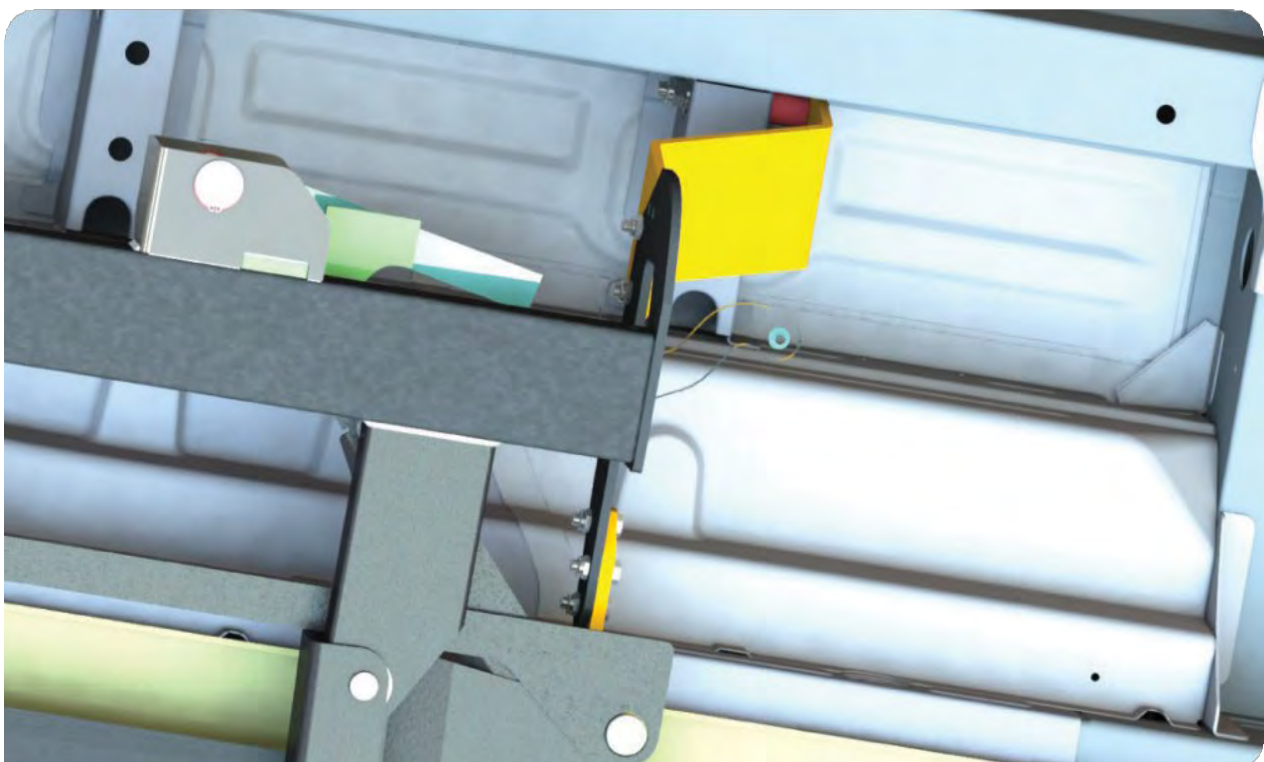
1 Details of position 1 (rear right bracket)

The front brackets must be aligned flush with the sill and temporarily secured with clamps. The rear bracket must be aligned flush with the vehicle chassis.

The hole of the bracket and the chassis must be on top of each other. A 25 mm spacer sleeve must be placed between the bracket and the chassis.

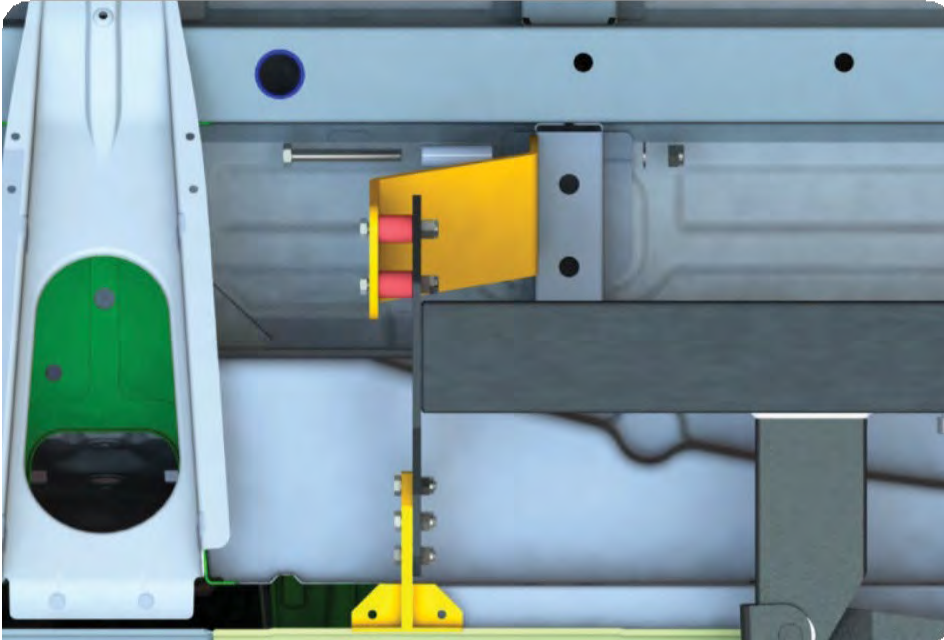


- 1x Distance sleeve
25 mm
- 1x Sleeve
- 1x screw M10x100
- 1x washer 10.5
- 1x Nut self. M10

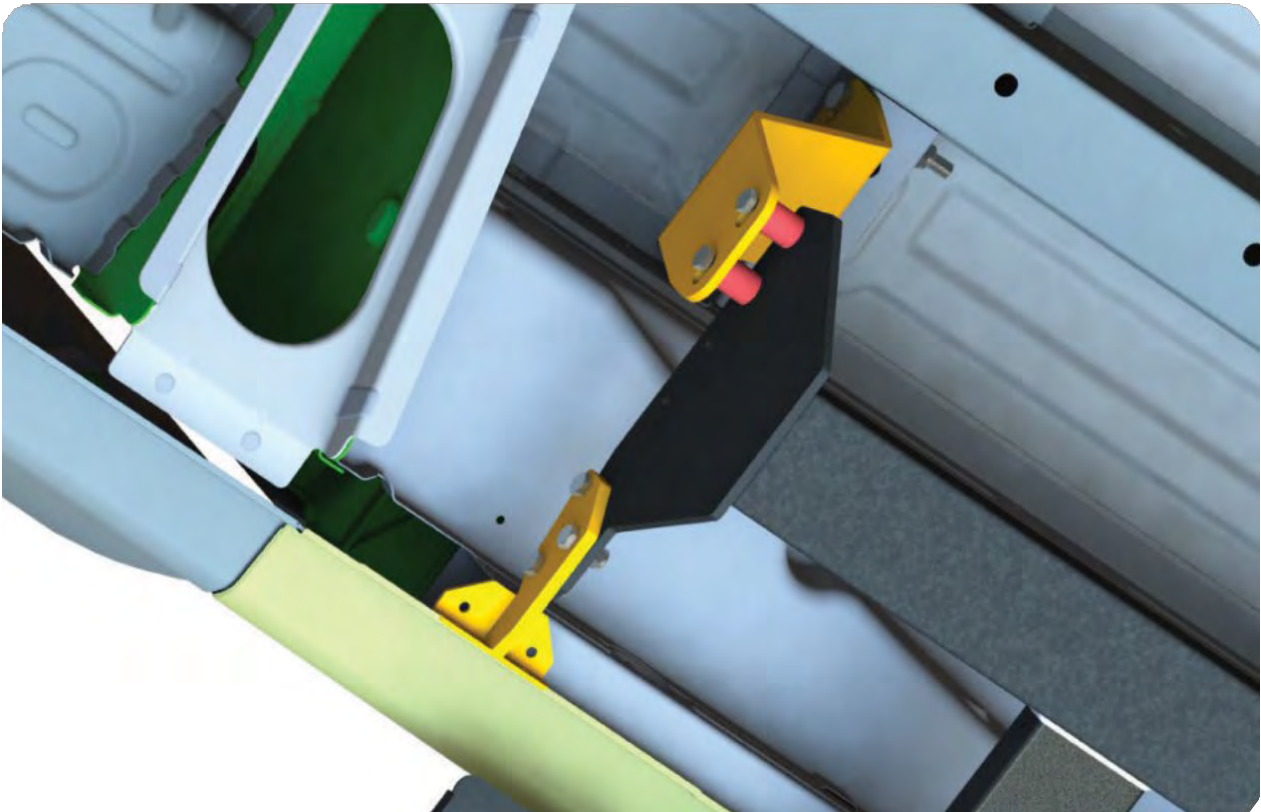


4. INSTALLATION

2 Details of position 2 (rear left bracket)



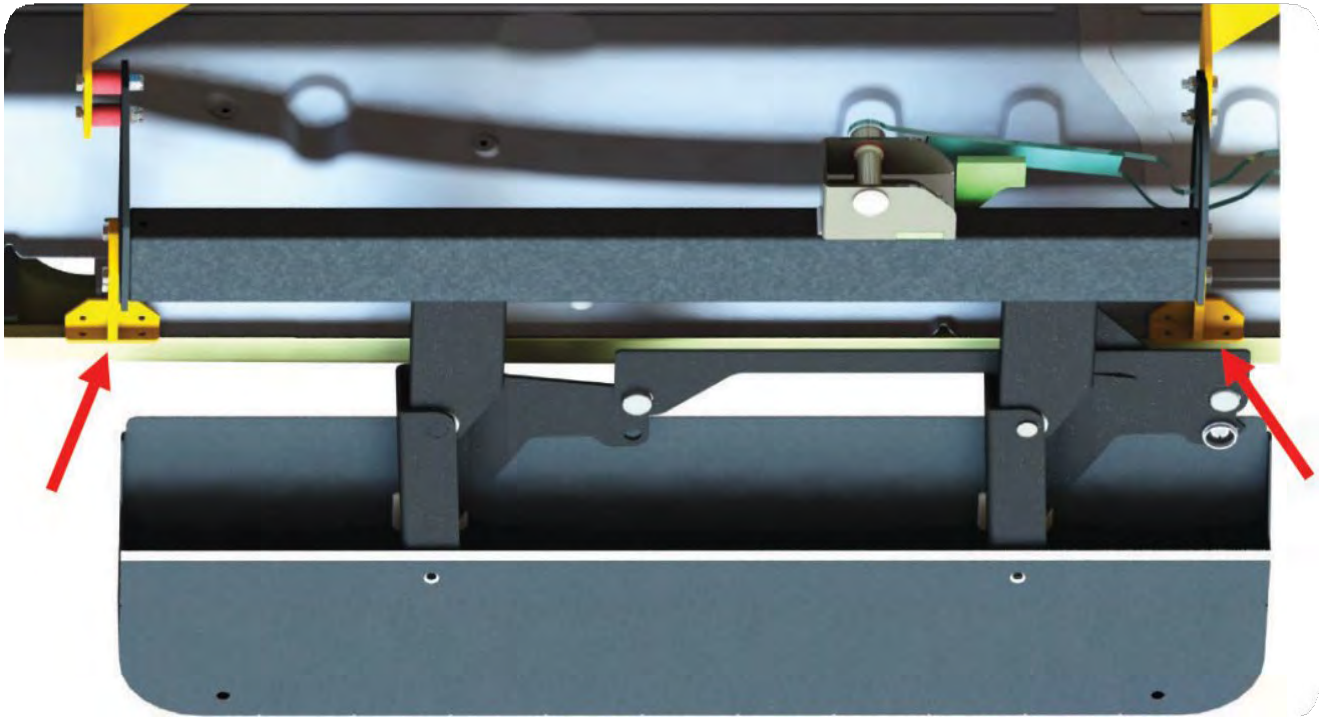
- 1x sleeve
- 1x screw M10x80
- 1x washer 10.5
- 1x Nut self. M10



4. INSTALLATION

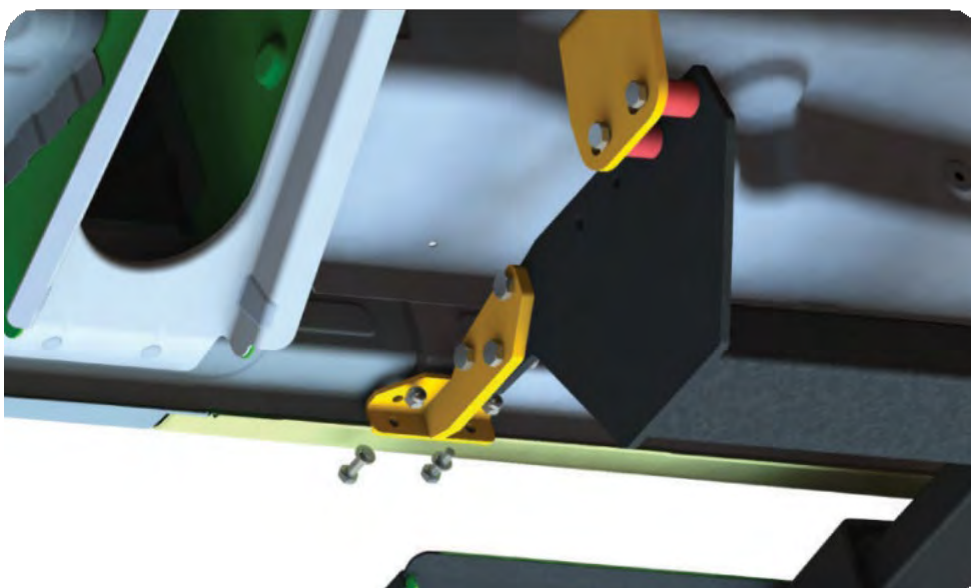
3 Details of position 3 (front bracket)

To attach the front mounting brackets, mark the position of the holes on the sill and drill through with a $\text{Ø}6.5 \text{ mm}$ drill. **2 x $\text{Ø}6.5 \text{ mm}$** holes on each mounting bracket.



Please note to reseal drilled holes with suitable means!

Then screw the mounting brackets to the sill.



4x screw M6x20

4x washer 6.5

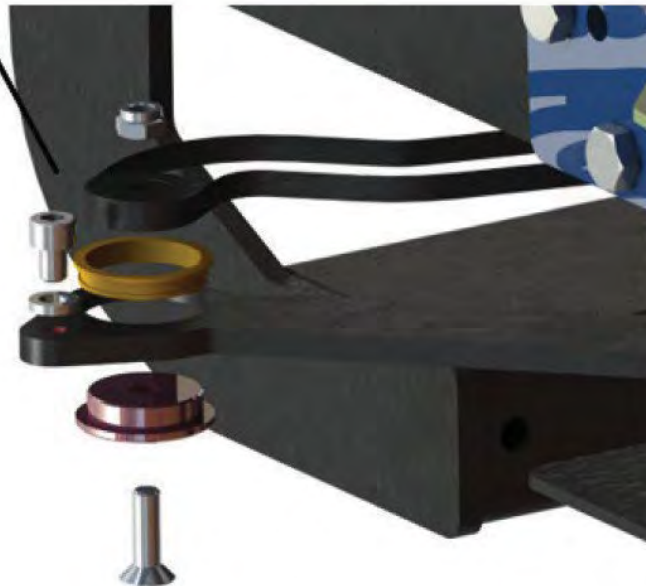
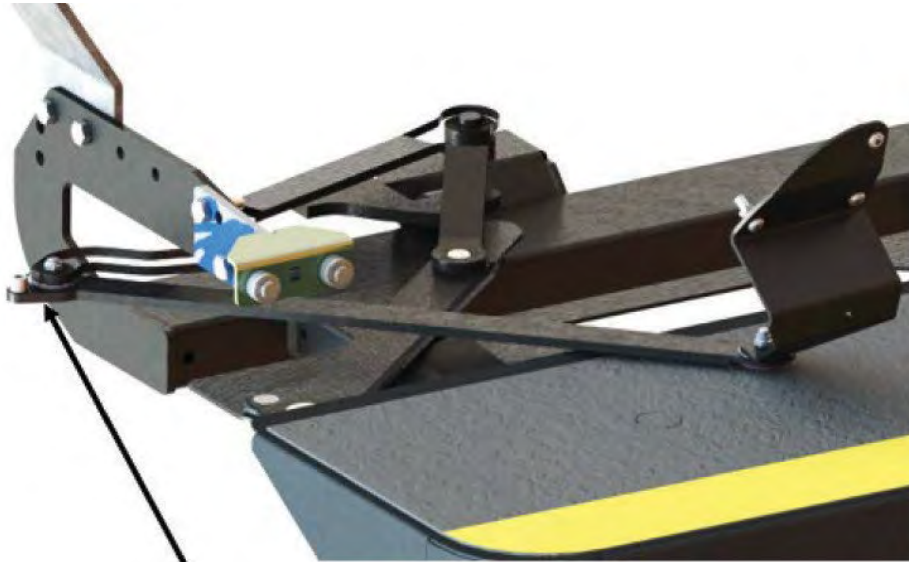
4x Nut self. M6

4. INSTALLATION

4.2 MOUNTING TO SLIDING DOOR

Mounting the door-combined step to the sliding door of the vehicle using the door mounting set supplied (compare chapter 2.3.3. "Overview door mounting set MB Sprinter").

1. Mounting connecting rod to actuating lever



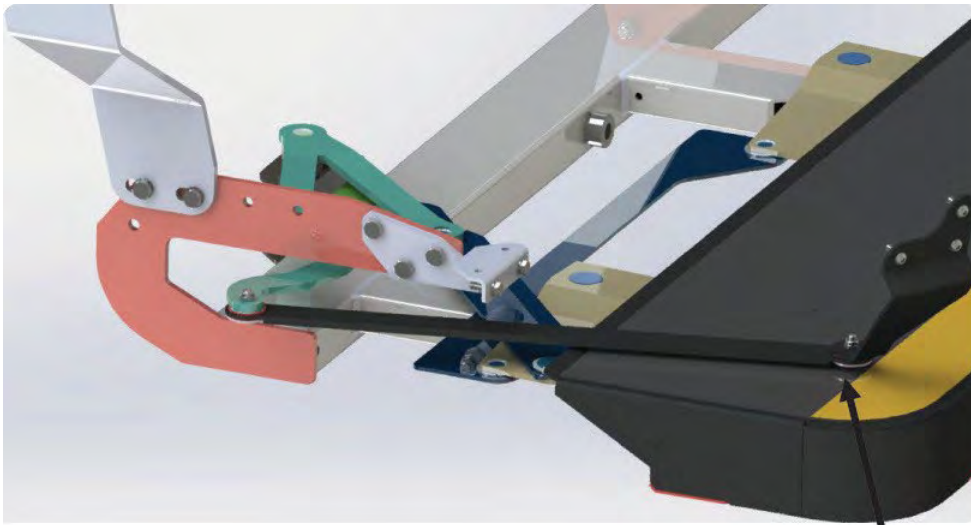
1x ISK screw M6x20
1x centring piece
1x clip bearing
1x nut self. M6

1x NLDF6

1x M6x6 screw

4. INSTALLATION

2. Mounting door connection plate to connecting rod.



1x ISK screw M6x20

1x centring piece

1x clip bearing

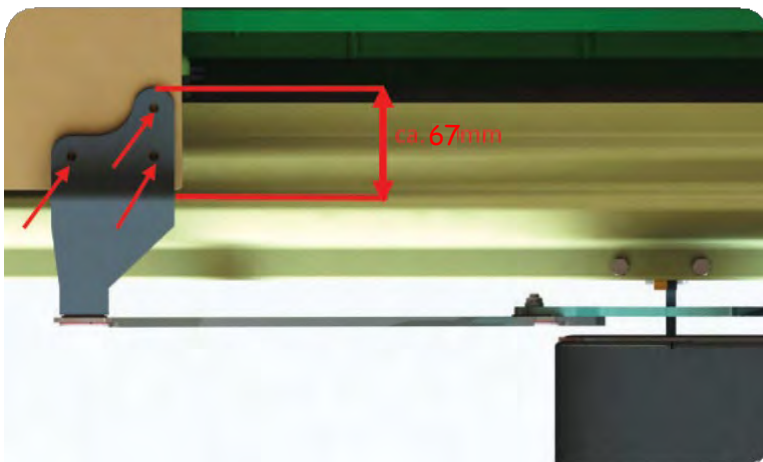
1x nut self. M6

4. INSTALLATION

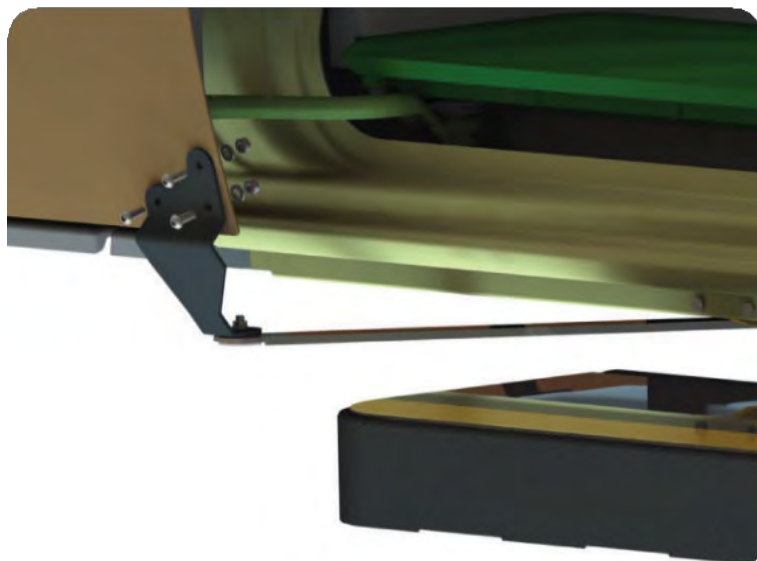
3. Mounting the door connection plate to the sliding door



Align the door connection plate and mark the drill holes on the sliding door.
Then drill **3 x Ø6.5 mm** holes at the marked points.



Please note to reseal drilled holes with suitable means!



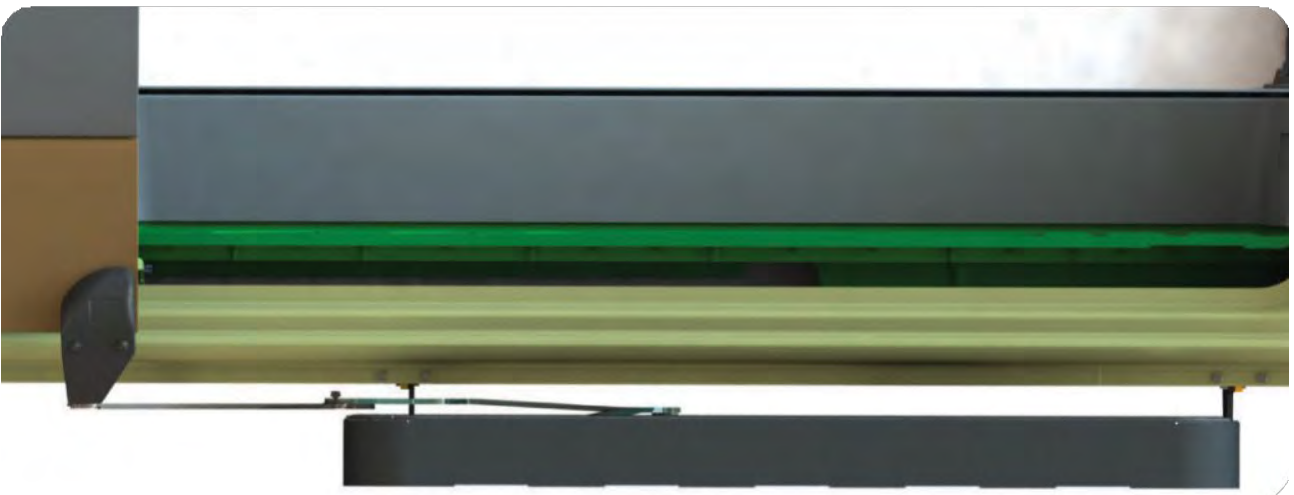
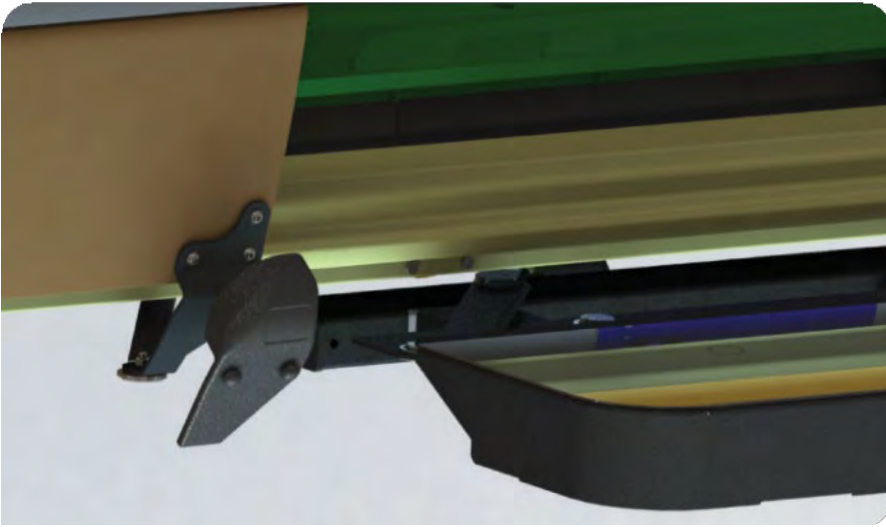
3x ISK flat head screw M6x16

3x washer 6.5

3x nut self. M6

4. INSTALLATION

To finish, a plastic cover cap can be fitted to the door connection plate using the clips.



Subsequently, the installation should be checked and the function tested.

5. USE OF STEP

The step should be tested after installation. To do this, follow the instructions below:

1. Visual inspection

Check that all screws are in the intended places and tightened.

2. Function

Extend and retract the stage several times. Check whether there are any unusual noises or irregular movements.

3. For any concerns, please contact our customer service. Contact details can be found in the last chapter.

6. CARE/MAINTENANCE

If the step functions poorly or no longer due to dirt or frost, all hinges must be cleaned or thawed. The moving parts are in maintenance-free plain bearings. Do NOT grease components.

The step must be cleaned as part of the normal cleaning cycle of the vehicle. This depends on the use of the vehicle and the degree of soiling caused by operation. Normal, mild cleaning agents should be used, just as for cleaning the other parts of the vehicle. The use of high-pressure cleaners is not recommended. Do not use aggressive solvents. These could damage the paint and glue used in the manufacture of the step.

7. DISPOSAL

Only have the disposal of the door-combined step carried out by qualified specialists after the period of use. The manufacturer accepts no liability for damage caused by improper execution of disposal.

8. CUSTOMER SERVICE

The customer service of LEGEND Fleet Solutions is at your disposal for ordering spare parts, for maintenance and repair work and for problems and questions.

The address is:

LEGEND Fleet Solutions
56957 Hwy 3 West, Tillsonburg,
ON, N4G 4G8 Canada
Tel: 519.688.1043
Email: info@legendfleet.com
www.legendsoftheroad.com

