

Product description:

Door-combined step for mounting under the vehicle floor

Type: X3

Vehicle type:

Ford Transit
Front-wheel drive

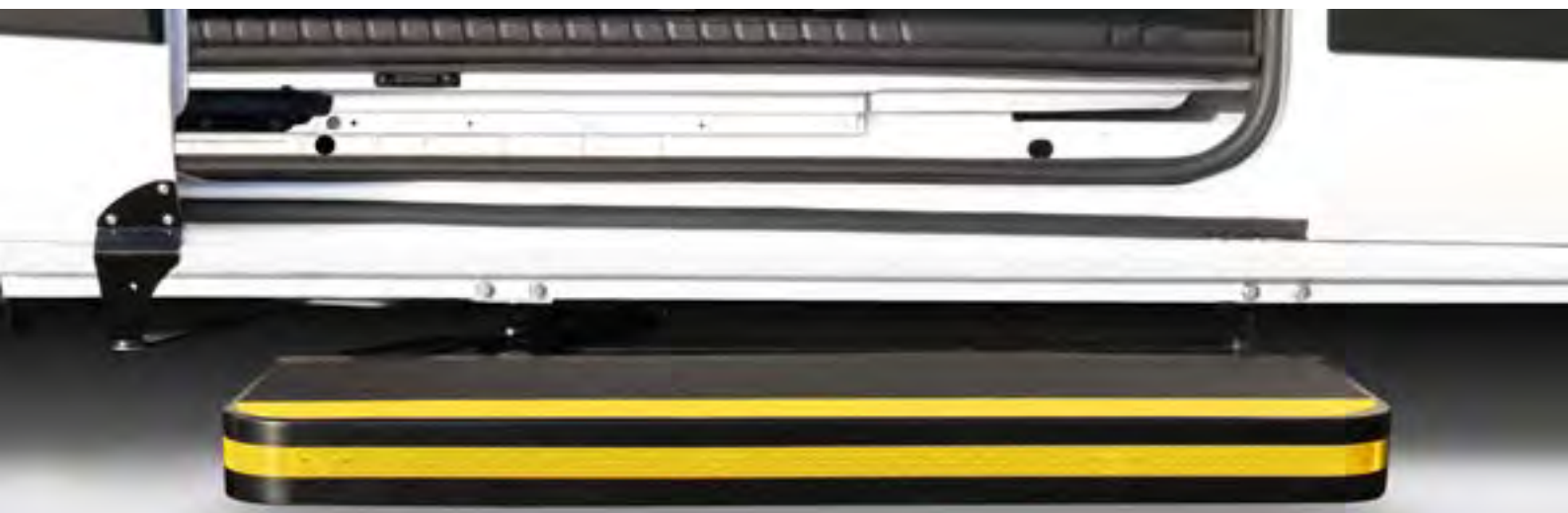
New Article-No.:

101311
101586

Old Article-No.:

X3-1000FFT.1
X3-1200FFT

Installation manual



Wheelbase:
middle and long



Installation time:
approx. 2 h



Load capacity:
350 kg

Technical details:

Legislation: with General Operating Permit



Steps



Protection



Ramps



Safety



Roof racks

FOREWORD

Dear Reader,

This operating manual provides all the information required for safe operation of the door-combined step. The step has been designed and built in accordance with the current state of the art and recognized safety regulations. Nevertheless, hazards to persons or property may arise, because not all danger points can be avoided if the functionality is to be maintained. However, accidents due to these dangers can be prevented by following these operating instructions.

These operating instructions only apply to the step specified on the cover sheet and in the footers. Please compare this information with the information on the type plate. After working through these operating instructions for the first time, keep this manual in a safe place for the entire service life of the door-combined step. If you sell the step, pass the operating instructions on to the next owner. All information, illustrations and dimensions in this manual are non-binding. No claims of any kind can be derived from them. Reprinting and reproduction of any kind, including excerpts, require the written consent of the manufacturer. Conversion or modifications to the door-combined step are only permitted with the written approval of the manufacturer.

Unauthorized modifications invalidate any liability on the part of the manufacturer and the warranty. Only use original spare parts and accessories approved by the manufacturer. Otherwise, the design properties of the door-combined step, the functionality or the safety may be impaired. The use of other parts therefore cancels the liability for the resulting consequences.

INHALT

FOREWORD	2
1. SAFETY	4
1.1 WARNING INFORMATION.....	4
1.2 INTENDED USE	4
1.3 RESTRICTIONS.....	4
1.4 SAFETY REGULATIONS.....	4
2. STEP.....	5
2.1 DESCRIPTION.....	5
2.2 CONSTRUCTION.....	5
2.3. VEHICLE SPECIFIC MOUNTING KIT.....	6
2.3.1 DESCRIPTION.....	6
2.3.2 OVERVIEW MOUNTING SET FORD TRANSIT <i>FRONT DRIVE</i>	6
2.3.3 DOOR MOUNTING KIT FORD TRANSIT (160-13-630AD.1)	7
2.3.4 OVERVIEW MOUNTING KIT FORD TRANSIT (160-13-106AD.1)	8
3. PRE-ASSEMBLY MOUNTING KIT	9
4. INSTALLATION	10
4.1 MOUNTING TO CAR BODY	10
4.2 MOUNTING TO SLIDING DOOR	14
5. USE OF THE STEP.....	18
6. CARE/MAINTENANCE	18
7. DISPOSAL.....	18
8. CUSTOMER SERVICE.....	18

1. SAFETY

1.1 WARNING INFORMATION

During installation, operation and maintenance of the door-combined step, there are various risks of injury and material damage. It is therefore essential that you read these operating instructions carefully before installation and operation. In addition to the safety instructions in this manual, please also follow the statutory regulations, in particular the safety and accident prevention regulations.

1.2 INTENDED USE

The door-combined step is used to make it easier for people to get in and out of a vehicle.

1.3 RESTRICTIONS

The step was designed to be functional and reliable. The product has been designed to be as simple and reliable as possible. Consideration has been given to the fact that the step may be installed under a vehicle operating in extreme environmental conditions.

1.4 SAFETY REGULATIONS

Always keep this safety manual with the step. The user's attention should be made aware of them before operating the step. Read and follow these safety instructions carefully. The step is designed as an extra step for entering the vehicle. In this case, the weight of the passenger must not exceed the maximum load.

1. The vehicle must be stationary before operating the step. Make sure that the handbrake has been pulled or the parking brake applied.
2. Regularly check the step for external damage and tight fit.
3. Before operating the step, make sure that there is no person or obstacle near the step. Make sure that there is no person or obstacle outside the vehicle in the direction of movement of the step.
4. It is recommended that only by the driver or other qualified person operate the step.
5. The driver or operator must have an unobstructed view of the step when operating it.
6. It is recommended to step on the middle of the step.
7. The step must be kept clean and free from oil and other slippery substances.
8. If you have doubts about the safety of a passenger when stepping on the step, help them.
9. Never use the step for any purpose other than that described here.
10. If you have any questions about the safe operation of the step, contact the responsible persons directly.
11. Never overload the step
12. Always operate the step until it is fully retracted or extended.
13. Repair and maintenance work must be carried out exclusively by qualified and trained personnel.
14. Only use original spare parts if parts of the step need to be replaced.
15. If the anti-slip profile of the step becomes slippery due to wear, the step must be replaced.
16. Notify the step supplier of any hazards you notice with regard to the step or during its operation.
17. Before each ride, check that the step is retracted.
18. When extending and retracting the step, there must be no persons on it.
19. There is a risk of jamming/crushing during transport and assembly. Therefore, secure the step with suitable aids during transport.

2. STEP

2.1 DESCRIPTION

The step is automatically extended when the side door is opened. This is achieved by a mechanical connection between the step and the sliding door. During the journey, it is retracted under the vehicle and protects the mechanism from external influences. The step has a non-slip surface. To increase safety, it is equipped with rounded outer edges.

2.2 CONSTRUCTION

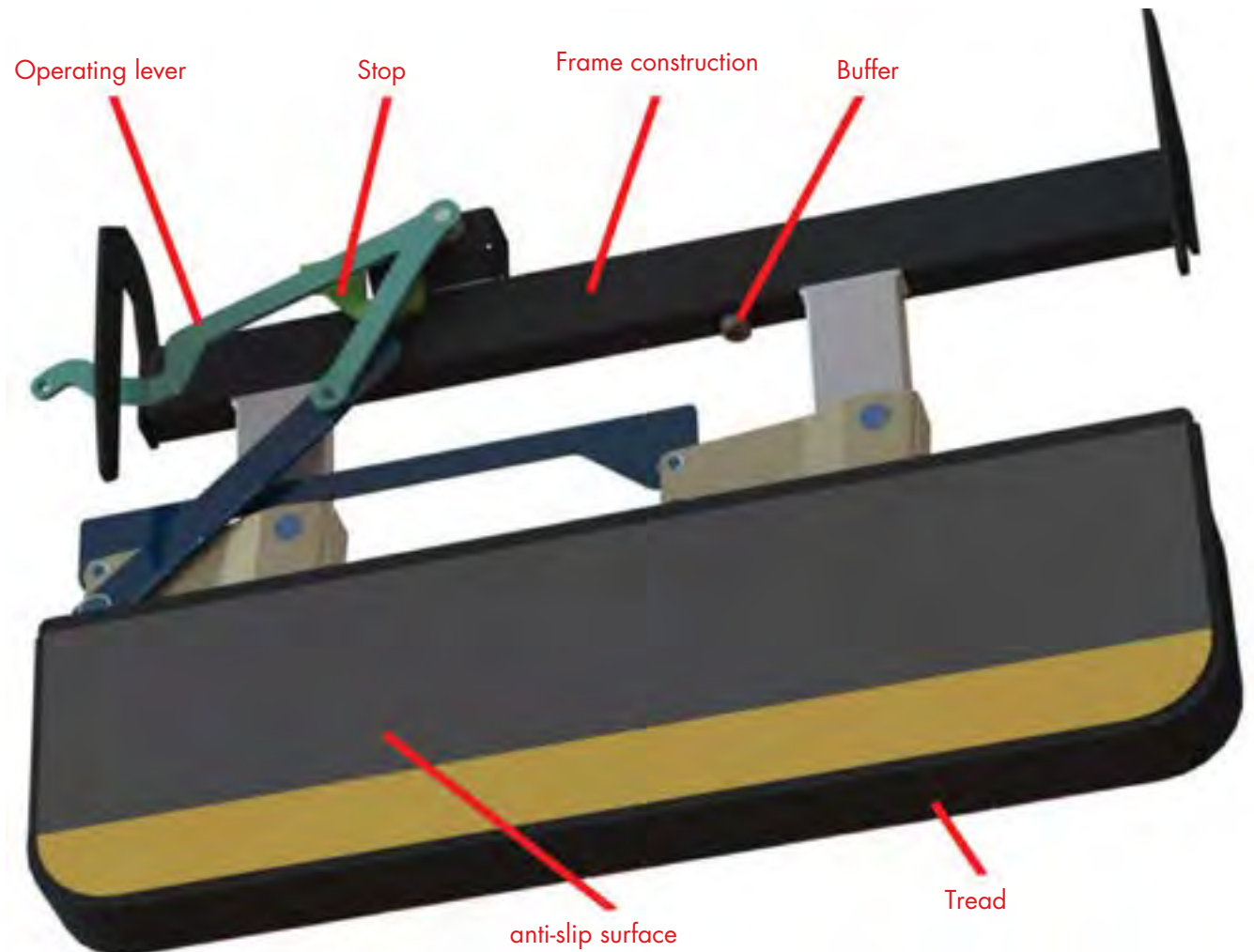


FIG. 1: STRUCTURE OF THE STEP

2.3. VEHICLE SPECIFIC MOUNTING KIT

2.3.1 DESCRIPTION

For each step, you will receive a vehicle-specific mounting set that is optimally matched to the respective vehicle.

This set consists in each case of a door mounting kit and a mounting kit.

- Mounting kit = Fastening the step to the vehicle floor
- Door mounting kit = Connection of the operating lever of the step to the sliding door from the vehicle

2.3.2 OVERVIEW MOUNTING KIT FORD TRANSIT FRONT DRIVE

- Article: FFT14-8000AD.1
- Vehicle type: Ford Transit
- Model: V363



FIGURE 2: DOOR MOUNTING KIT FORD TRANSIT FRONT WHEEL DRIVE (160-13-630AD.1)



FIGURE 3: MOUNTING KIT FORD TRANSIT FRONT WHEEL DRIVE (160-12-362AD.1)

2.3. VEHICLE SPECIFIC MOUNTING KIT

2.3.3. OVERVIEW DOOR MOUNTING KIT FORD TRANSIT (160-13-630AD.1)

Pos	Article	Description	Quantity
1	2950 0170	Center piece	2
2	2950 0158	Door connection plate	1
3	2950 0179	Connecting rod	1
4	MCM 2503	Clip bearing	2
5	DIN 7991-M6X20-10.9 VZ	Countersunk screw ISK	2
6	DIN 985-M6 VZ	Hexagon nut flat shape	5
7	ISO 7380-M6x20 – 20N	Flat head screw ISK	3
8	DIN 126-6.6 ST-VZ	Washer	3
9	NLDF6	Locking plate	1
10	DIN912-M6x8-8.8	Cap screw with ISK	1

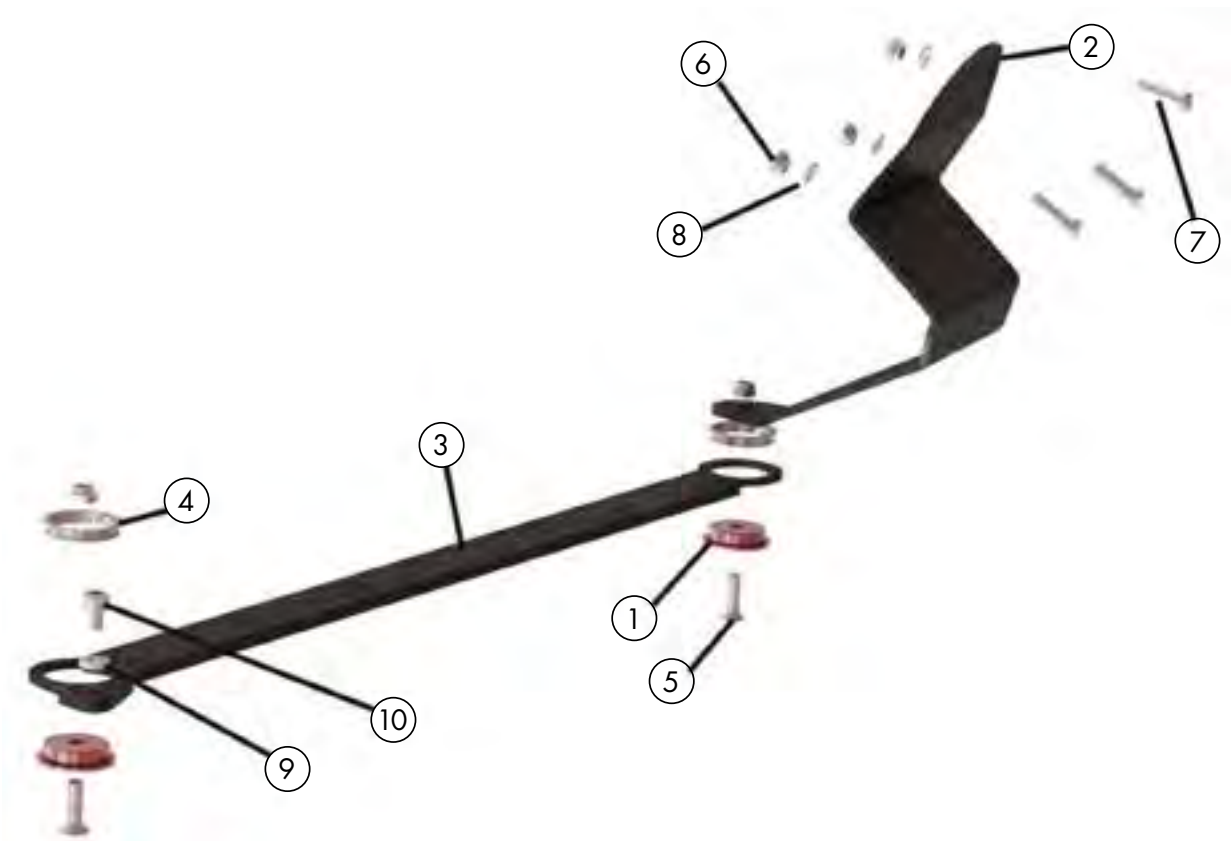


FIGURE 4: DOOR MOUNTING KIT FORD TRANSIT "EXPLOSION"

2.3. VEHICLE SPECIFIC MOUNTING KIT

2.3.4 OVERVIEW MOUNTING KIT FORD TRANSIT (160-13-106AD.1)

Pos	Article	Description	Quantity
1	29500150	Mounting bracket	2
2	29500207	Front retaining plate, slightly offset	1
3	29500208	Rear retaining plate, strongly offset	1
4	29500153	Plate	1
5	DIN 933-M8X25-8.8 VZ	Hexagon head screw	11
6	DIN 933-M6X25-8.8 VZ	Hexagon head screw	4
7	DIN 9021 - 8.4	Washer	3
8	DIN 9021 - 6.4	Washer	4
9	DIN 933-M8X120-8.8 VZ	Hexagon head screw	1
10	DIN 985-M8-8 VZ	Hexagon nut self.	12
11	DIN 985-M6 VZ	Hexagon nut self.	4
12	2949 0223	Tube 8 mm	3
13	2949 0222	Tube 5 mm	1

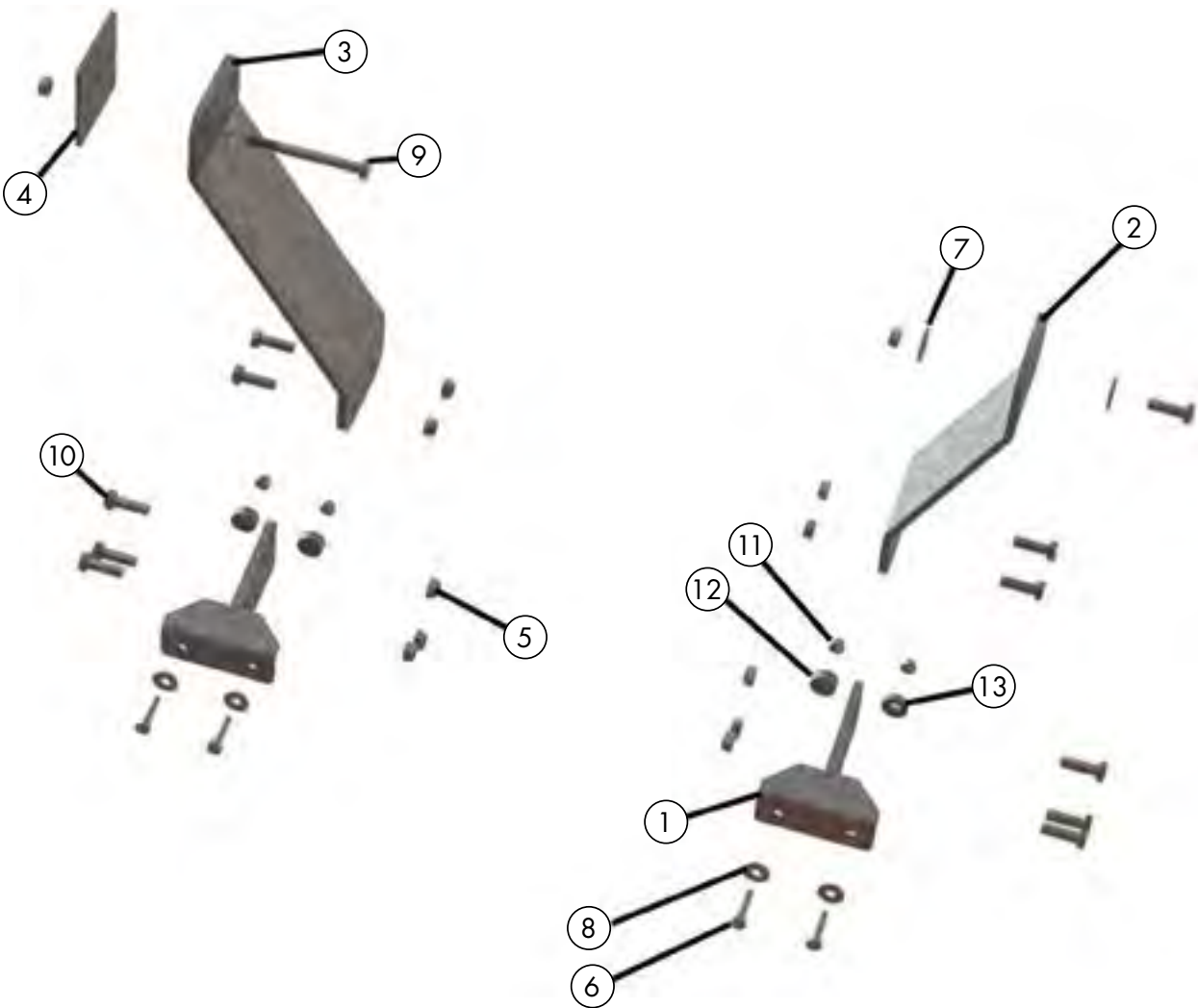


FIGURE 5: MOUNTING KIT FORD TRANSIT "EXPLOSION"

3. PRE-ASSEMBLY MOUNTING KIT

Pre-assemble the holders as shown:

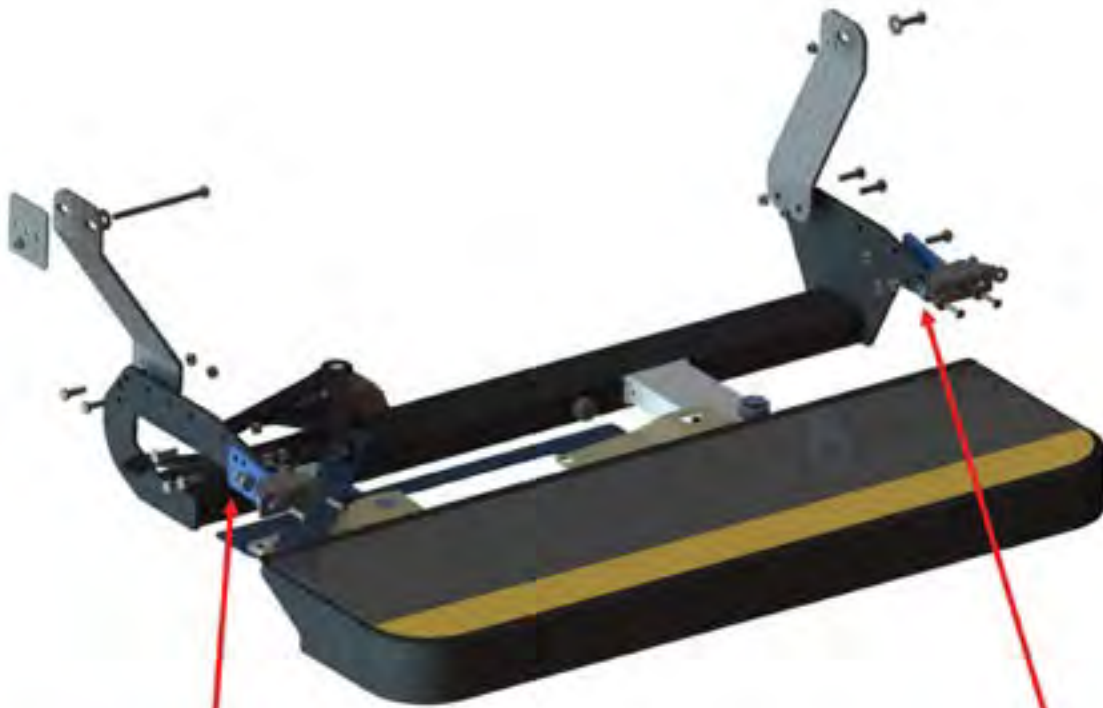
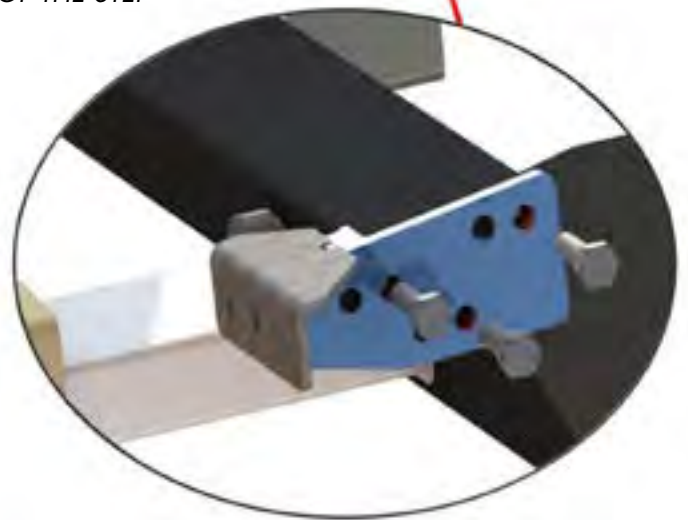
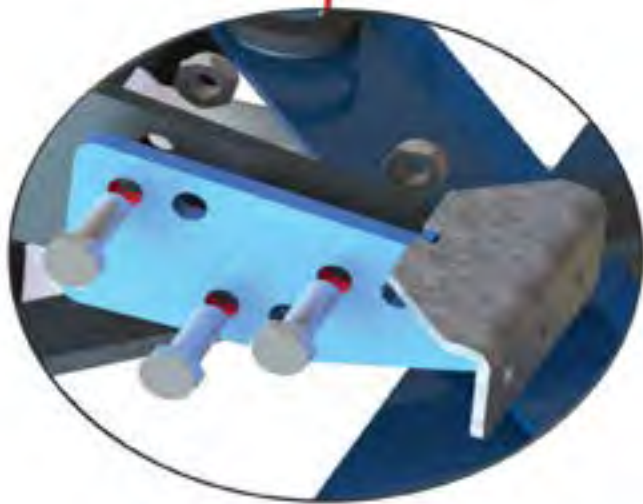


FIG. 6: PRE-ASSEMBLY OF THE STEP



4. INSTALLATION

4.1 MOUNTING ON CAR BODY

Mount the door-combined step to the vehicle body using the supplied mounting kit (see chapter 2.3.4 "Overview of mounting kit Ford Transit"). Align the step as shown in Figure 6 **horizontally and parallel** to the vehicle using a jack and secure it to the vehicle with suitable tools (gripping pliers and screw clamp) to prevent it from falling down.

1. Overview of the fixing points

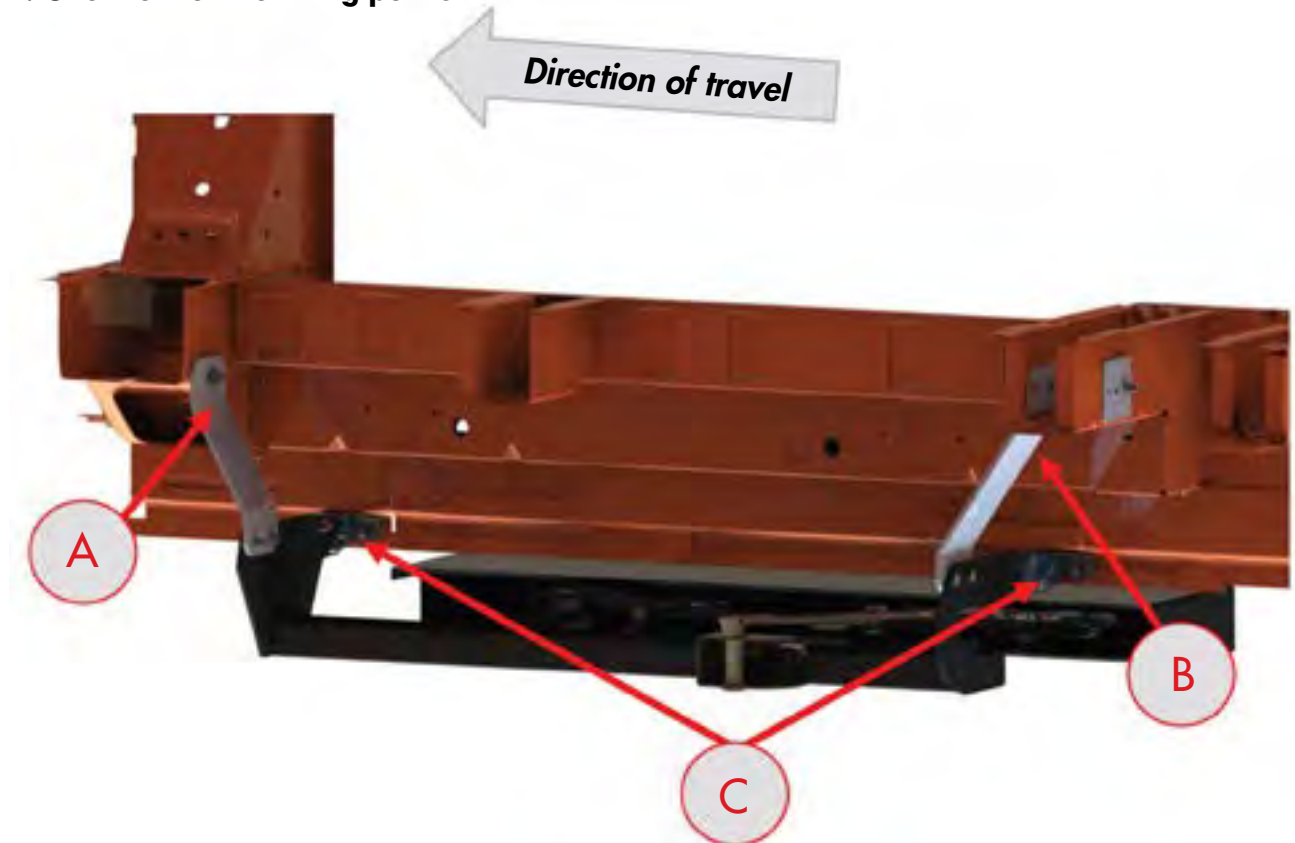


FIGURE 7: MOUNTING POINTS X3 FORD TRANSIT

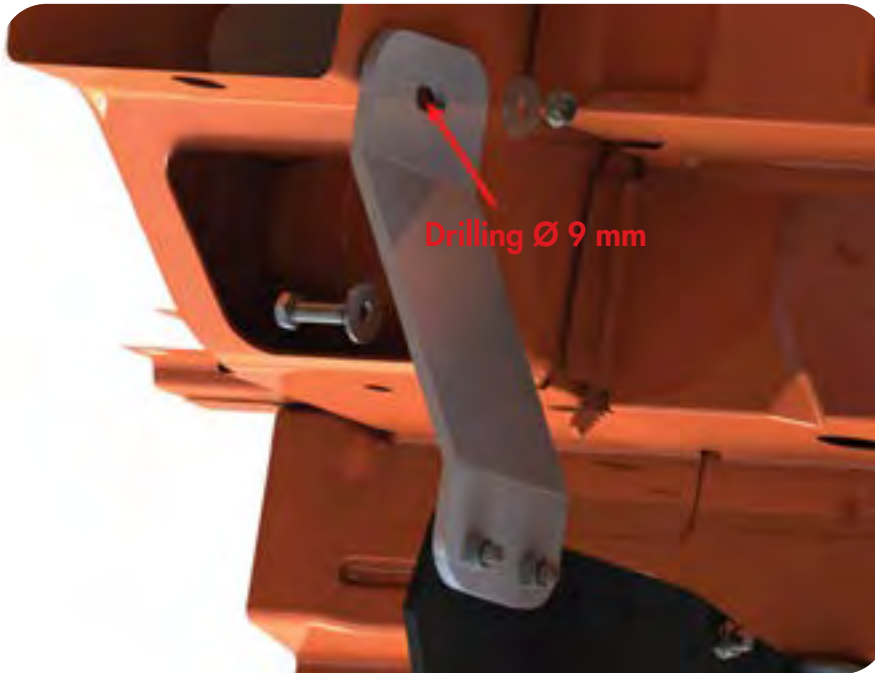


If the two rear brackets "A + B" on the chassis have too much air (approx. 1 cm) then bracket "A" can also be screwed to the step from the outside.

4. INSTALLATION

The individual attachment points are discussed below.

2. Fixing point „A“



Mark a drill hole on the body using the mounting bracket and drill 1x Ø 9.0 mm through the body. The mounting bracket can then be mounted

Please reseal drilled holes with suitable means!

FIGURE 8: ATTACHMENT POINT "A"

3. Fixing point „B“



Mark a drill hole on the body using the mounting bracket and drill 1x Ø9.0 mm through the body. The mounting bracket can then be mounted.

So that you can drill past next to the bracket for the leaf springs of the rear axle, the bracket "B" may have to be moved forward or backward by 1 or 2 bolt positions "X" further on the support of the step.

Please note to reseal drilled holes with suitable means!

FIGURE 9: ATTACHMENT POINT "B"

4. INSTALLATION

So that you can drill next to the bracket for the leaf springs of the rear axle, the bracket "B" may have to be moved forward or backward by 1 or 2 screw rasters "X" further on the support of the step.



4. Fixing point „C“

Overview of spacer arrangement:

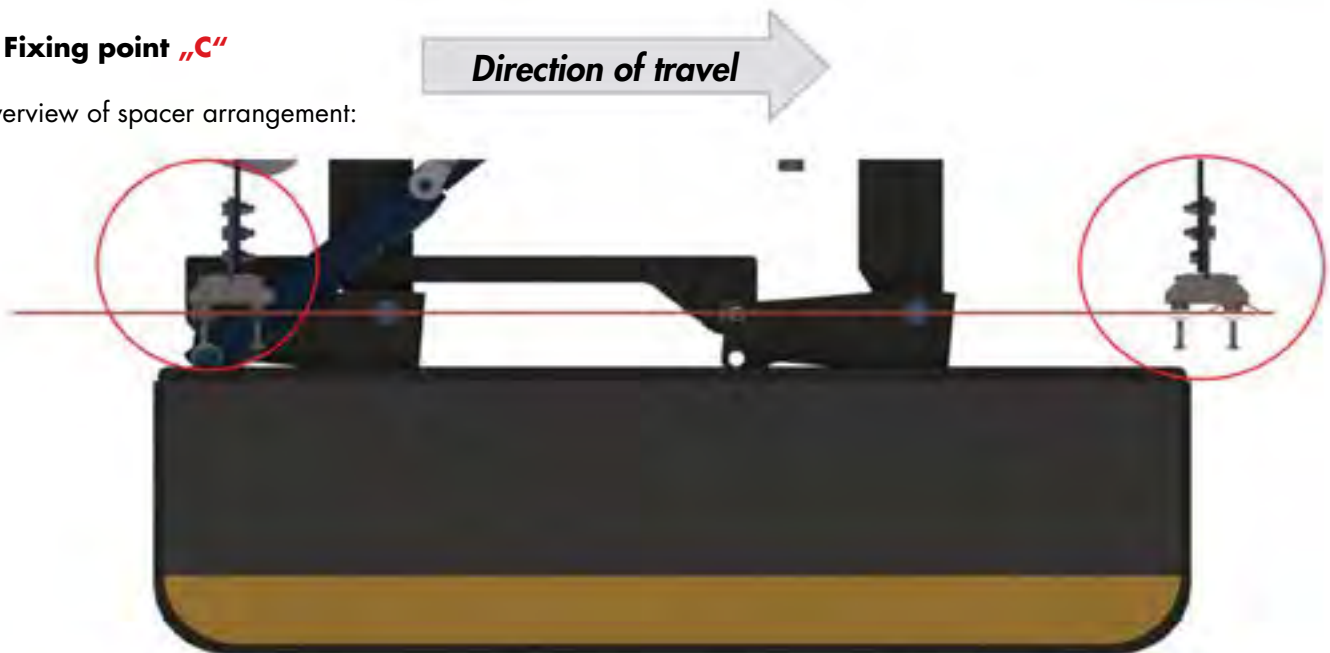
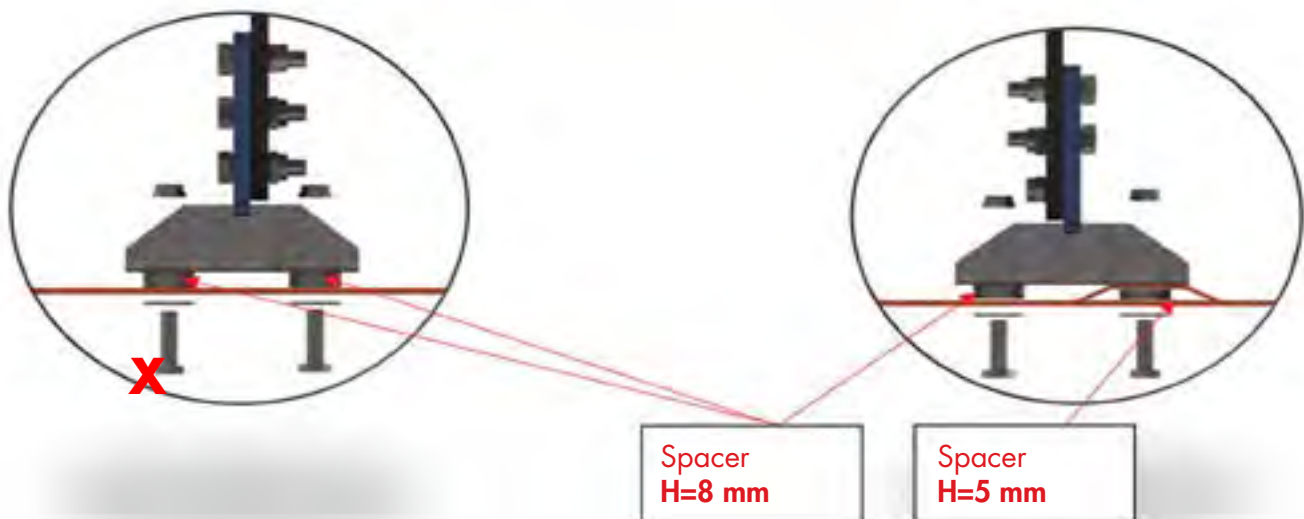
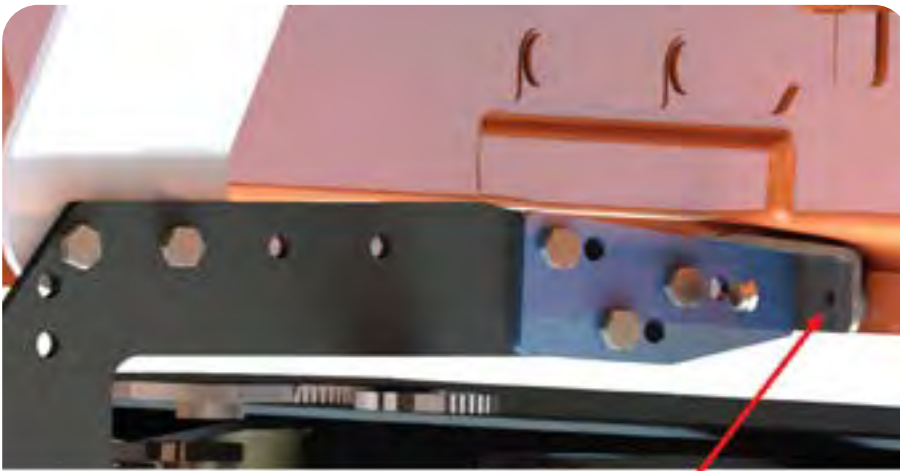


FIG. 10: OVERVIEW OF FASTENING POINTS "C"



4. INSTALLATION

Fastening the step to the sill:



Drill 4x Ø 6,5 mm

In the next step, align and secure the step.

To attach the front mounting brackets, mark the position of the holes on the sill and drill **4x Ø6.5 mm** holes with a drill bit. Drill 2 x 6.5 mm holes on each mounting bracket.

Please reseal drilled holes with suitable means!



Then screw the mounting brackets to the sill.

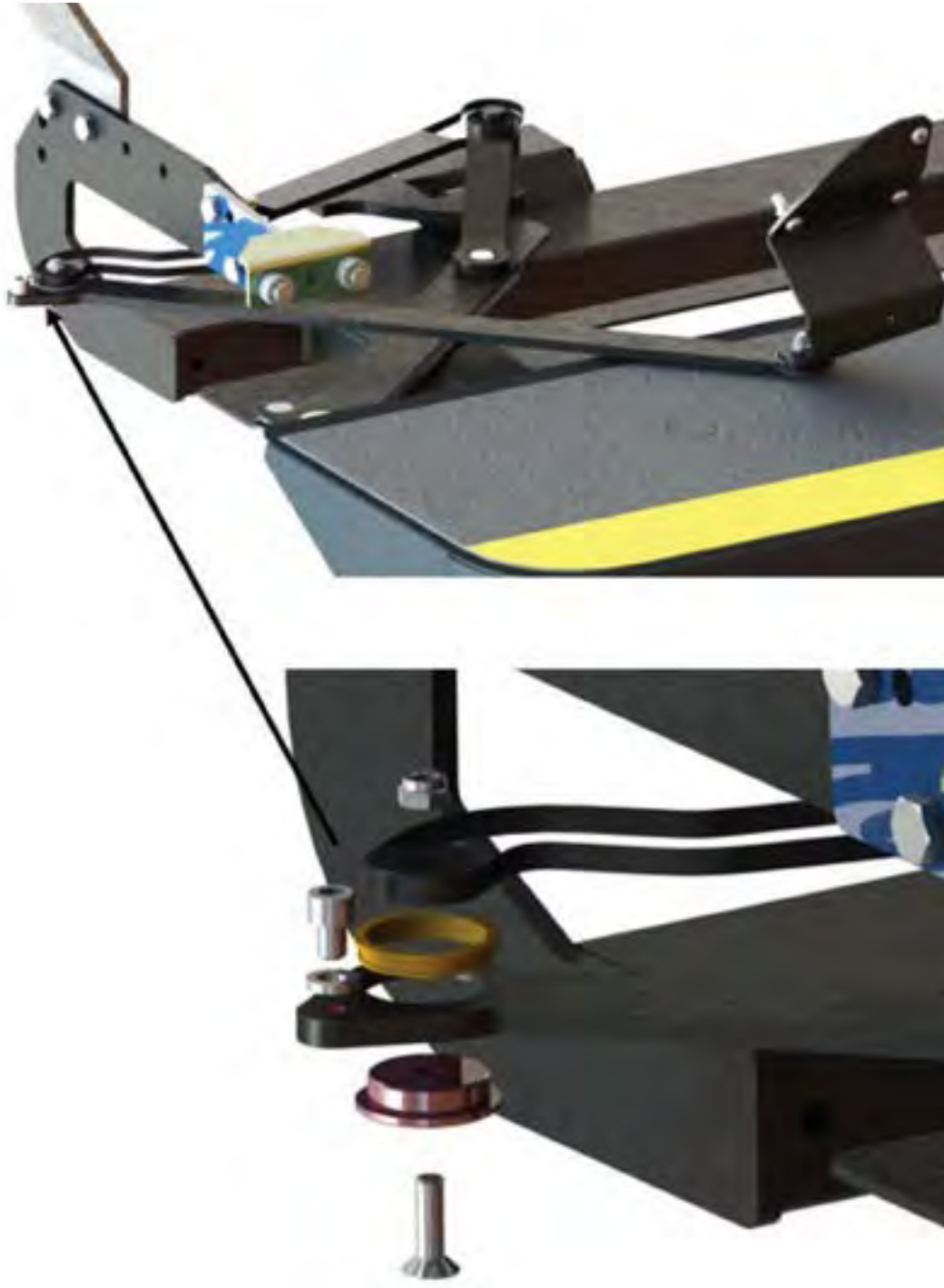


4. INSTALLATION

4.2 MOUNTING TO SLIDING DOOR

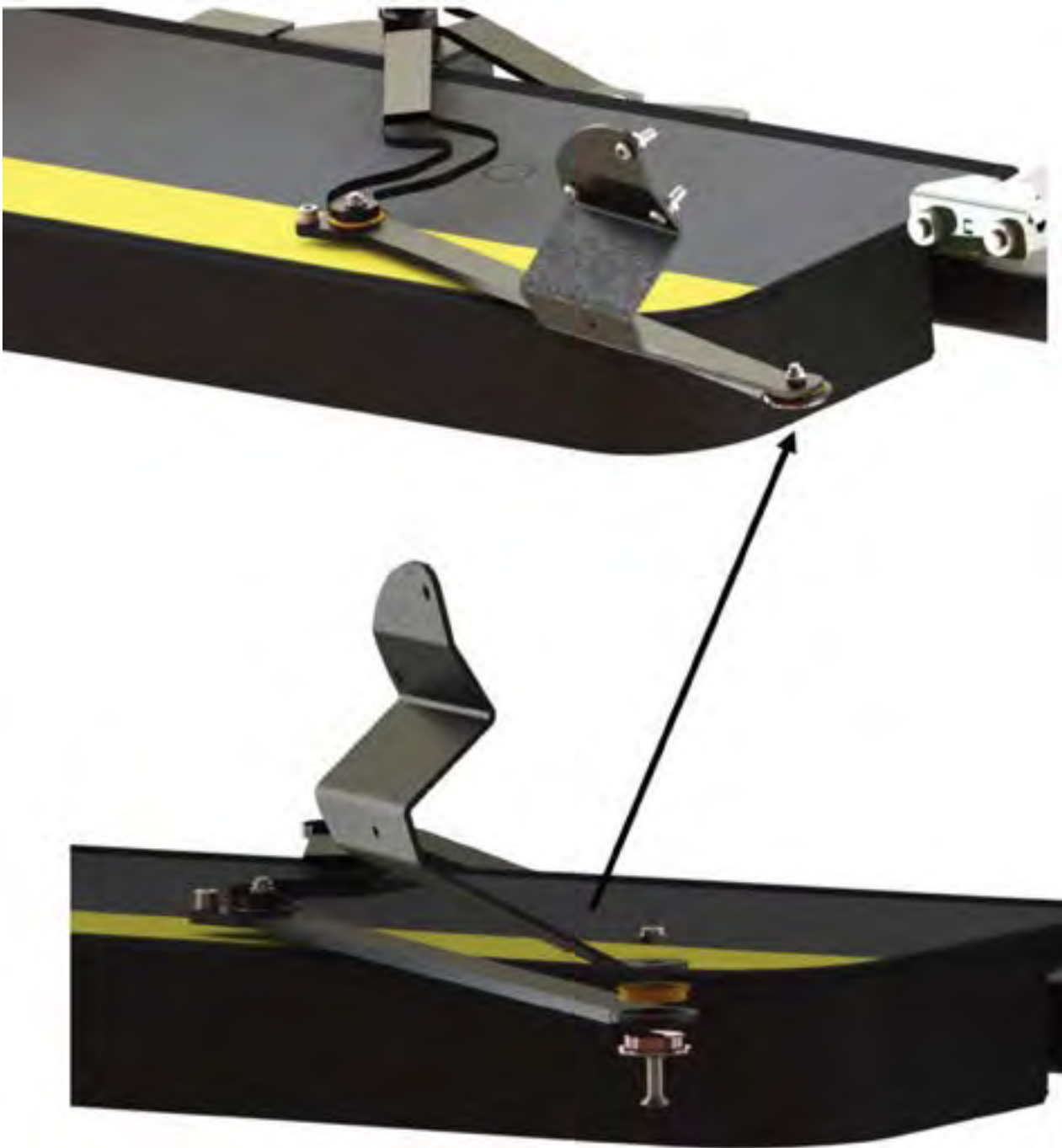
Mounting the door-combined step to the sliding door of the vehicle using the door mounting set supplied (compare chapter 2.3.3. "Overview door mounting set Ford Transit").

1. Mounting connecting rod to actuating lever



4. INSTALLATION

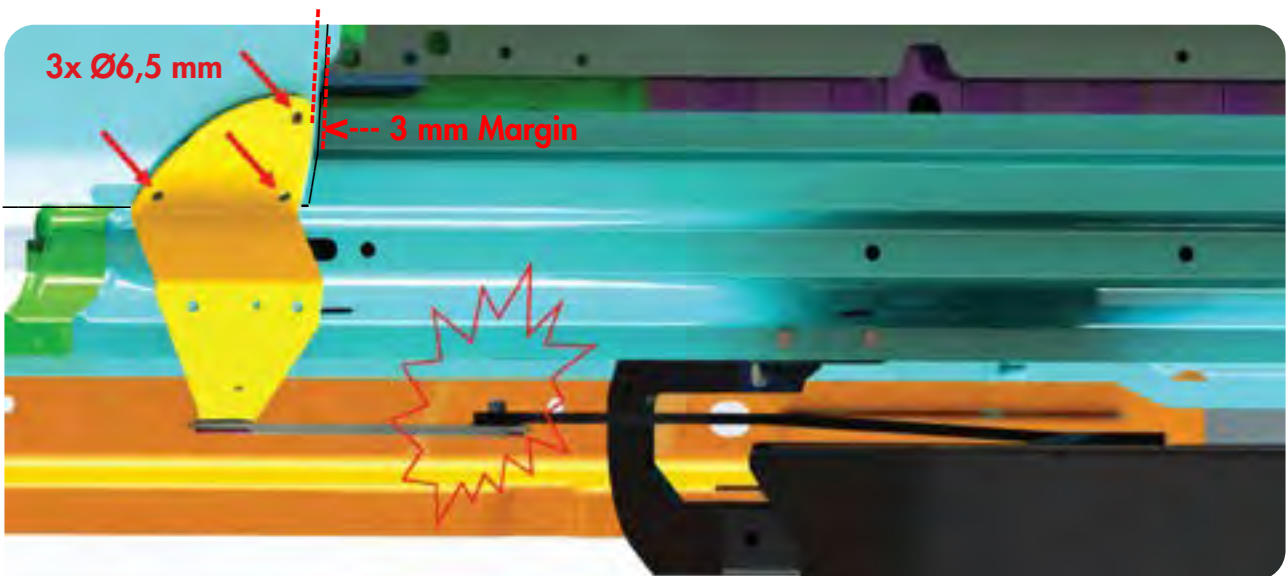
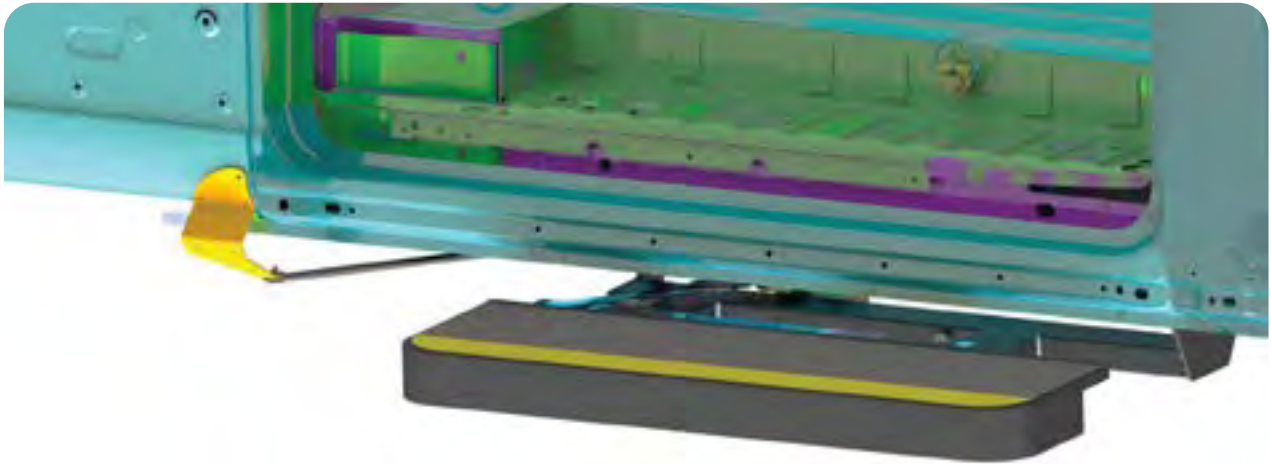
2. Mounting door connection plate to connecting rod.



4. INSTALLATION

3. Mounting the door connection plate to the sliding door

Align the door connection plate and mark the drill holes to the sliding door.



Make sure that the lever arm can be moved smoothly and does not collide at any point. To do this, open and close the door several times with the door connection plate temporarily attached. Then drill 3 x Ø6.5 mm holes at the marked points.

Please reseal drilled holes with suitable means!

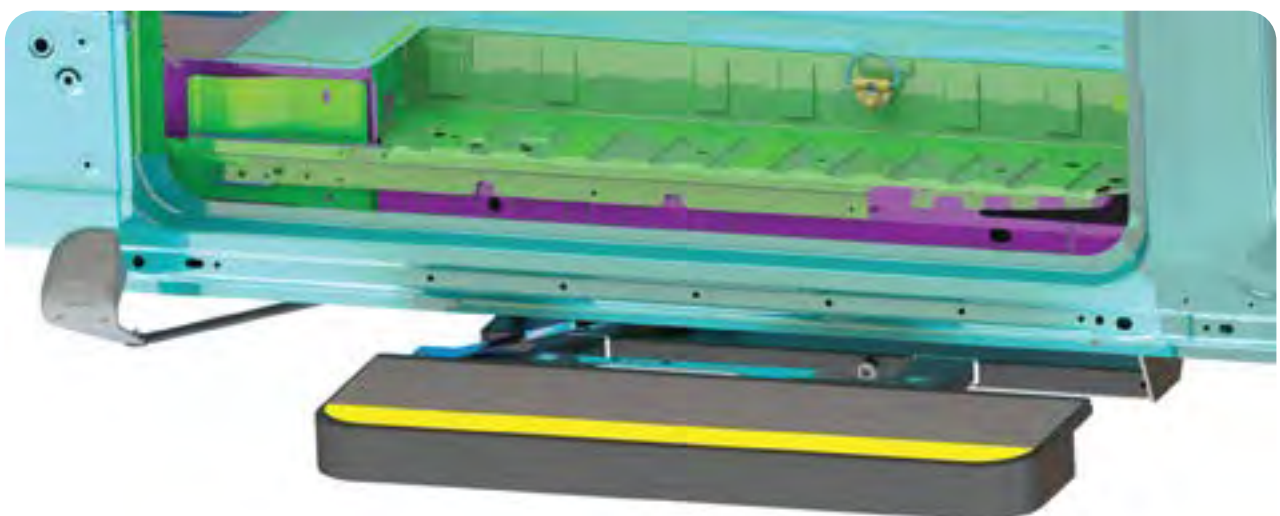
4. INSTALLATION



In the last step, the door connection plate is screwed to the sliding door and the cover cap is fastened with clips.



Subsequently, the installation should be checked and the function tested.



4. USE OF THE STEP

The step should be tested after installation. To do this, follow the instructions below:

1. **Visual inspection**

Check that all screws are in the intended places and tightened.

2. **Function**

Extend and retract the stage several times. Check whether there are any unusual noises or irregular movements.

3. For any concerns, please contact our customer service. Contact details can be found in the last chapter.

5. CARE/MAINTENANCE

If the step functions poorly or no longer due to dirt or frost, all hinges must be cleaned or thawed. The moving parts are in maintenance-free plain bearings. Do NOT grease components.

The step must be cleaned as part of the normal cleaning cycle of the vehicle. This depends on the use of the vehicle and the degree of soiling caused by operation. Normal, mild cleaning agents should be used, just as for cleaning the other parts of the vehicle. The use of high-pressure cleaners is not recommended. Do not use aggressive solvents. These could damage the paint and glue used in the manufacture of the step.

6. DISPOSAL

Only have the disposal of the door-combined step carried out by qualified specialists after the period of use. The manufacturer accepts no liability for damage caused by improper execution of disposal.

7. CUSTOMER SERVICE

The customer service of **Legend Fleet Solutions** is at your disposal for ordering spare parts, for maintenance and repair work and for problems and questions.

The address is:

Legend Fleet Solutions
56957 Hwy 3 West,
Tillsonburg, ON
N4G 4G8 Canada

