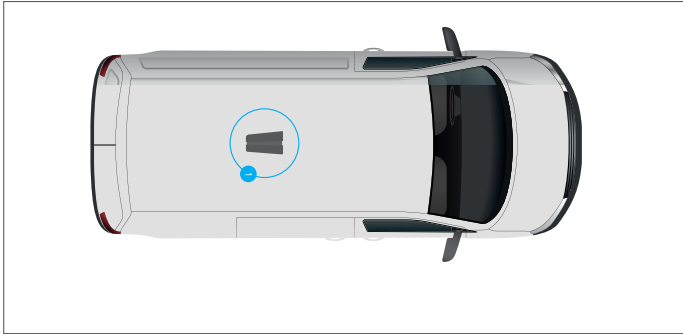


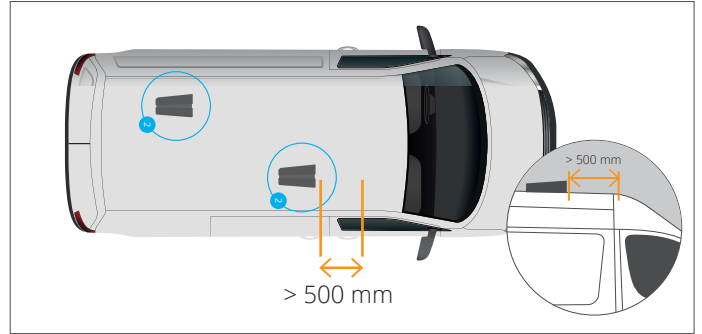


INSTALLATION INSTRUCTIONS FOR VANFAN

POSITIONING VANFAN



If you have 1 fan, place it as close as possible to the centre point of the roof which can be determined by measuring from the bulkhead to the tailgate or rear doors.



If you have 2 fans, place them diagonally so that they are evenly spaced. Divide the space into 3 equal parts lengthwise (measured from the bulkhead to the tailgate or rear doors) and place the VanFan 1/3 from the front and 1/3 from the rear and widthwise half-way along the half-diagonal.

DRILLING



1. Mark out the holes using the drilling template provided and create the holes in the roof using a 90 mm punch (available upon request).

POSITIONING



2. Place the foam gasket underneath the VanFan and push the tubes through the holes with the grille at the front. *Note: the foam gasket should be fitted at all times!* The foam gasket is available separately in a range of thicknesses: ask our specialists for advice on the correct thickness to use.

To install the Van Fan Electric, continue to step 5 (see other side).

FINISHING



3. Screw the cover plate onto the inside of the roof using the screws provided. The roof fan is installed: easy!

A special adapter is available for use with roof linings.



Note: Do not install behind objects that could affect the flow of air such as rotating warning lights, aerials or spotlights. Pay attention to ridges and uneven areas on the roof. The VanFan can also be installed underneath a roof rack. In that case, always install the VanFan between the bars rather than underneath them.

NB: The number of fans required will depend on the individual situation (M3, load, etc.). Ask our specialists for advice.



INSTALLATION INSTRUCTIONS FOR VANFAN ELECTRIC

REMOVE EXISTING COVER PLATE



Step 4 is only needed when installing an existing VanFan, as this cover plate is only used for the mechanical version. Detach the screw part (unclick). Unscrew four screws and remove the cover plate.

VAN FAN ELECTRIC



Check whether the intermediate piece and the cover plate of the VanFan Electric has a foam edge. If this has been supplied separately, apply the foam edge yourself to both the intermediate piece and the cover plate.

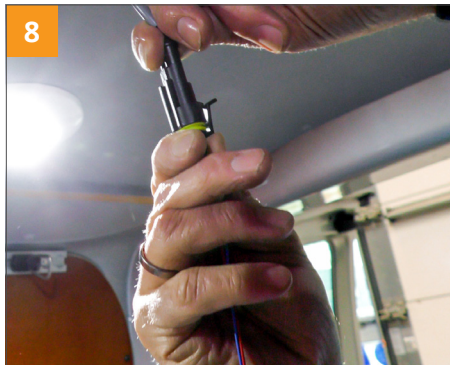


Secure the intermediate piece using the four screws.

Please note: Install the fan in the correct direction: on the outlet side (back).



Place the finger protector (grille) and fan in the cover plate correctly (with the arrow pointing upwards).



Connect the wiring (connection method depends on customer requirement and vehicle options).



Secure the VanFan module cover plate using the three screws provided.

RESULT

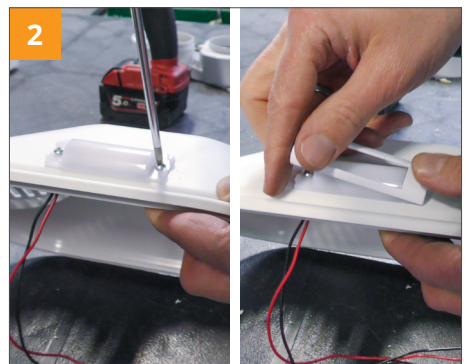


The VanFan is installed: easy!

OPTIONAL: INSTALLING LIGHTS



Drill holes in the stipulated places on the inside of the cover plate.



Screw down the lights and click the cover plates on top.